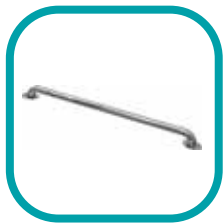
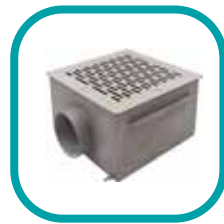


XENO ZONE

Water Technologies and Equipment

STAINLESS STEEL EQUIPMENT

FOR SWIMMING POOLS



Contents

Water Features

Waterfalls	4
Air Bubble Elements.	9
Counter Current Units	12

Pool Basin Equipment

Skimmers	16
Main Drains	22
Suction Outlets	24
Return Nozzles	27
Hydromassage Jets	32
Level Controllers.	34
Wall Conduits	34

Water Heating

Electric Heaters	36
Heat Exchangers	37
Adapters	38

Pool Lighting

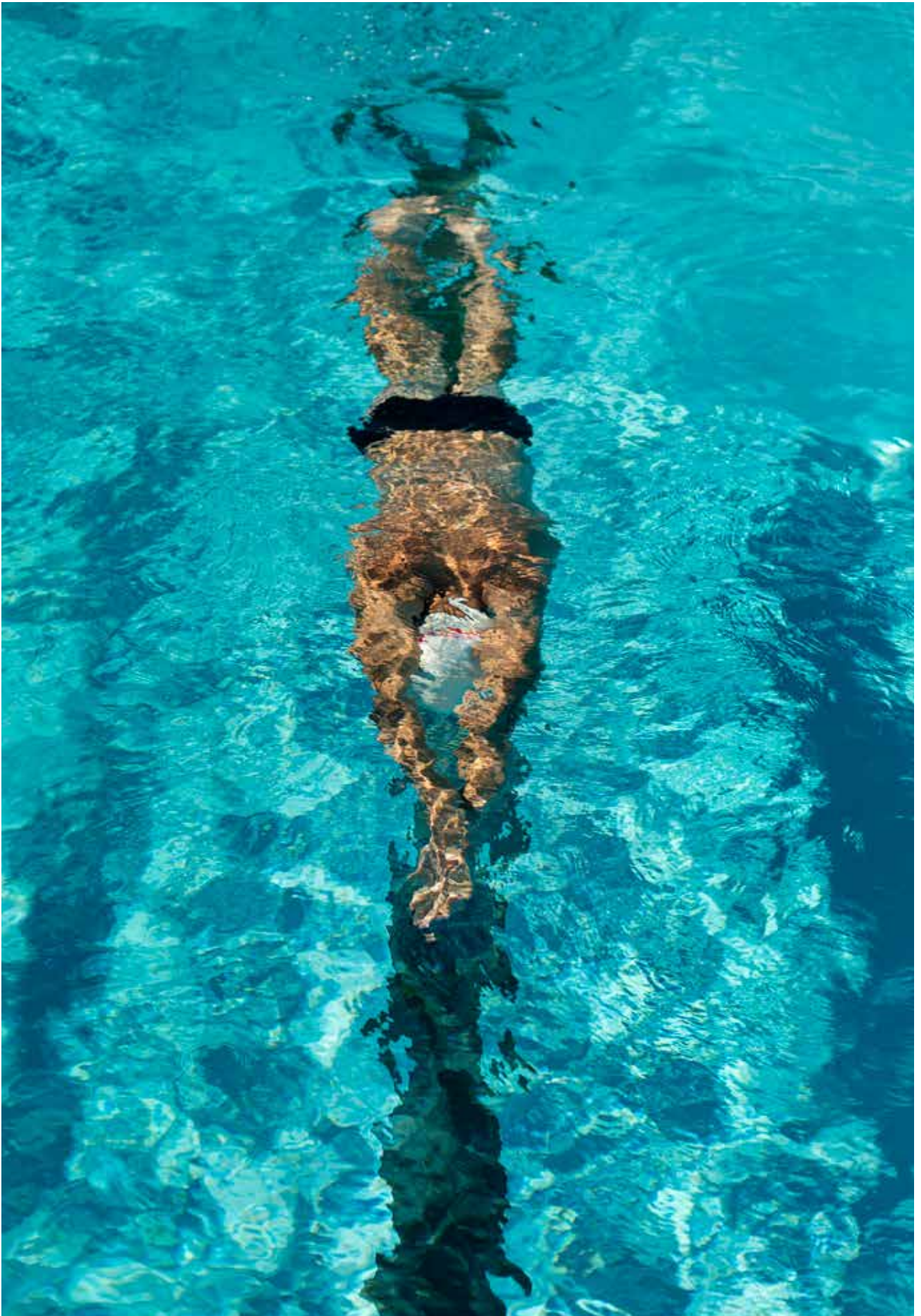
Spotlights	40
Junction Boxes	41

Automation and control

Piezoelectric Buttons	44
Pneumatic Buttons	45

Handrails & Lane Line Anchors	48
--	-----------

Other	52
------------------------	-----------



XENO ZONE

Water Technologies and Equipment

WATER FEATURES



WATERFALLS



AIR BUBBLE JETS



**COUNTER
CURRENT
UNITS**

WATERFALLS

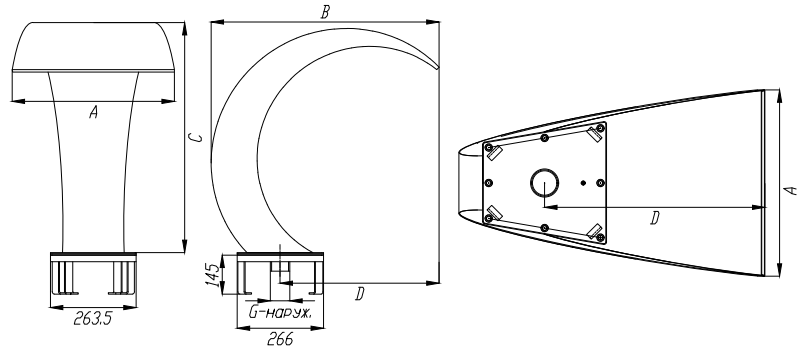
The principle of waterfall operation is to pump water into the body of the waterfall with its further overflow through the spillway in a continuous, without separation into layers, flow mode.

Waterfalls are perfectly complement to the interior of any pool, and can also be used as a massage device.

The bodies of the waterfalls are made of mirror polished stainless steel.

On the basis of standard models, it is possible to manufacture waterfalls and water curtains of any design and size.

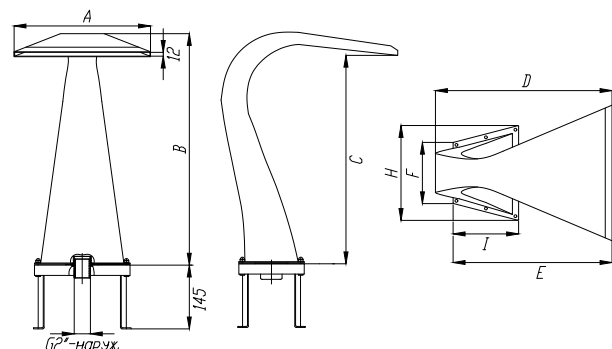
Cobra Waterfall



Code AISI-304	Code AISI-316	Name	Water flow m ³ /h
VK.35	VK.35/1	Cobra mini 350	15
VK.40	VK.40/1	Cobra 400	20
VK.50	VK.50/1	Cobra 500	30
VK.60	VK.60/1	Cobra 600	40
VK.70	VK.70/1	Cobra 700	45
VK.10	VK.10/1	Cobra 1000	70

Code	A	B	C	G"
VK.35	350	475	480	1,5
VK.40	400	665	625	2
VK.50	500	710	695	2
VK.60	600	690	695	2
VK.70	700	885	850	2,5
VK.10	1000	900	840	2,5

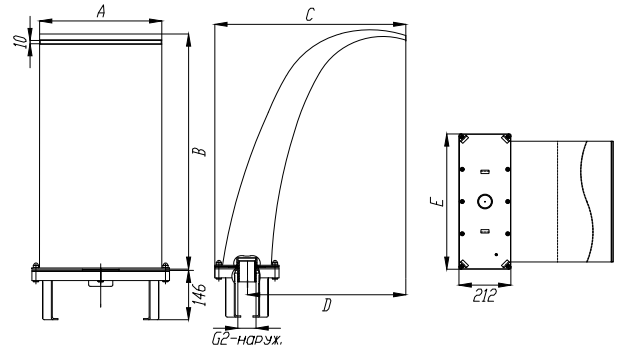
Mermaid Waterfall



Code AISI-304	Code AISI-316	Name	Water flow m ³ /h
VRs.47	VRs.47/1	Mermaid 470	30
VRs.60	VRs.60/1	Mermaid 600	40

Code	A	B	C	D	E	F	H	I
VRs.47	470	855	690	650	585	225	350	240
VRs.60	600	1032	880	870	880	290	460	302

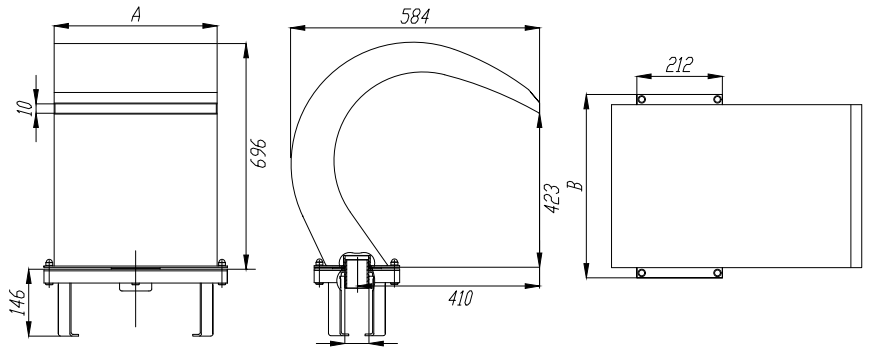
Niagara Waterfall



Code AISI-304	Code AISI-316	Name	Water flow m3/h
VN.40	VN.40/1	Niagara 400	20
VN.50	VN.50/1	Niagara 500	30

Code	A	B
VN.40	400	790
VN.50	500	1070

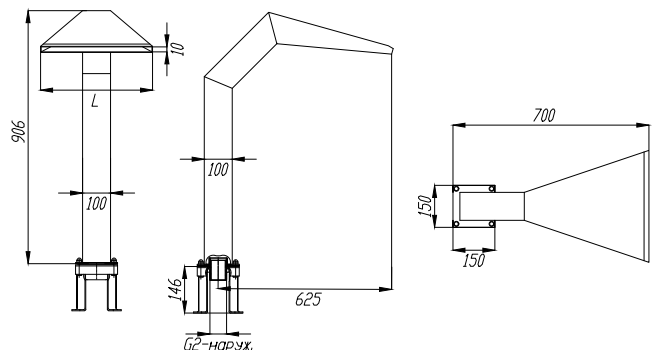
Rondo Waterfall



Code AISI-304	Code AISI-316	Name	Water flow m3/h
VR.40	VRP.40/1	Rondo 400	20
VR.50	VR.50/1	Rondo 500	30

Code	A
VR.40	400
VR.50	500

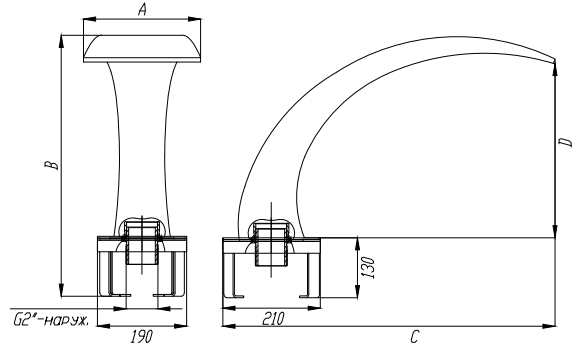
Cascade Waterfall



Code AISI-304	Code AISI-316	Name	Water flow m3/h
VKs.40	VKs.40/1	Cascade 400	25
VKs.50	VKs.50/1	Cascade 500	30

Code	L
VKs.40	400
VKs.50	500

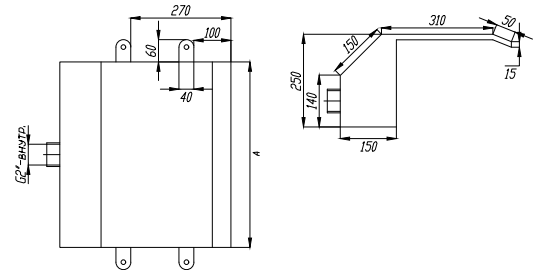
Ode Waterfall



Code AISI-304	Code AISI-316	Name	Water flow m ³ /h
VO.25	VO.25/1	Ode 250	20
VO.50	VO.50/1	Ode 500	30

Code	A	B	C	D
VO.25	250	430	510	370
VO.50	500	345	800	80

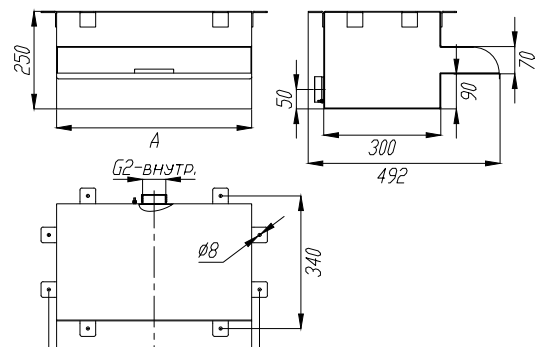
Inwall Spillway



Code AISI-304	Code AISI-316	Name	Water flow m ³ /h
VS.50	VS.50/1	Inwall spillway 500	25
VS.60	VS.60/1	Inwall spillway 600	30
VS.10	VS.10/1	Inwall spillway 1000	70
VS.15	VS.15/1	Inwall spillway 1500	100
VS.20	VS.20/1	Inwall spillway 2000	140

Code	A	G
VS.50	500	2" x1
VS.60	600	2" x1
VS.10	1000	2" x2
VS.15	1500	2" x3
VS.20	2000	2" x4

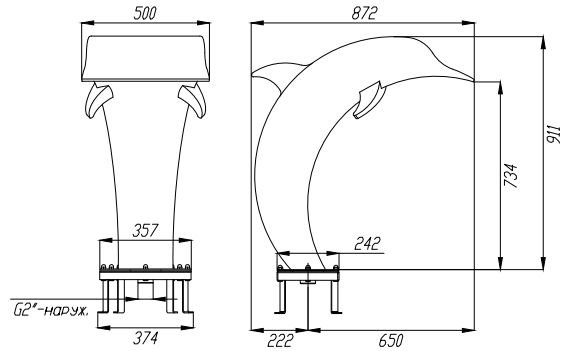
Ceiling Spillway



Code AISI-304	Code AISI-316	Name	Water flow m ³ /h
VPT.50	VPT.50/1	Ceiling spillway 500	25
VPT.60	VPT.60/1	Ceiling spillway 500	30
VPT.70	VPT.70/1	Ceiling spillway 500	35

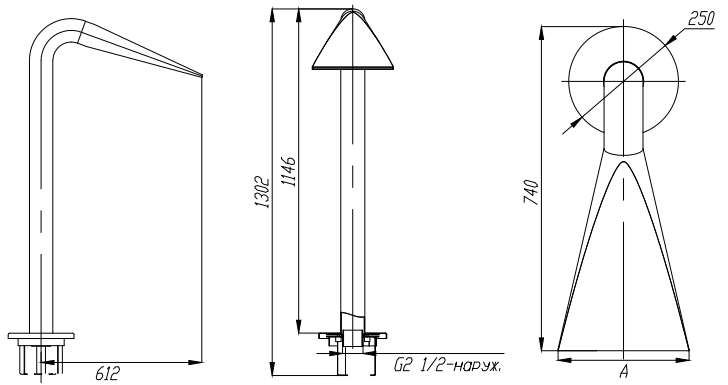
Code	A
VPT.50	500
VPT.60	600
VPT.70	700

Dolphin Waterfall



Code AISI-304	Code AISI-316	Name	Water flow m ³ /h
VD.50	VD.50/1	Dolphin 500	30

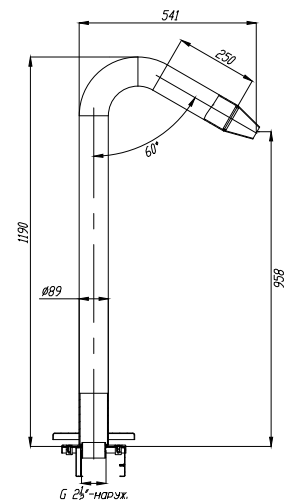
Goose Cannon



Code AISI-304	Code AISI-316	Name	Water flow m ³ /h
VG.30	VG.30/1	Goose 300	30
VG.60	VG.60/1	Goose 600	40

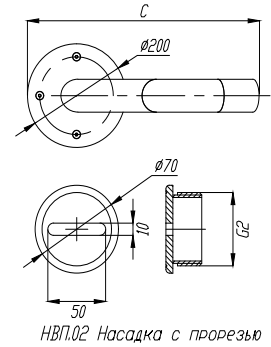
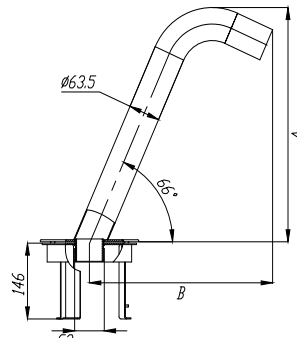
Code	A
VG.30	300
VG.60	600

Water cannon 1200



Code AISI-304	Code AISI-316	Name	Water flow m ³ /h
VP.12	VP.12/1	Water cannon 1200	30

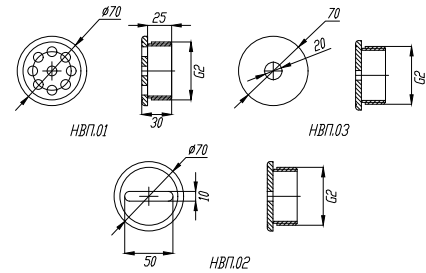
Water Cannon



Code AISI-304	Code AISI-316	Name	Water flow m3/h
VP.50	VP.50/1	Water Cannon 500	20
VP.10	VP.10/1	Water Cannon 1000	25

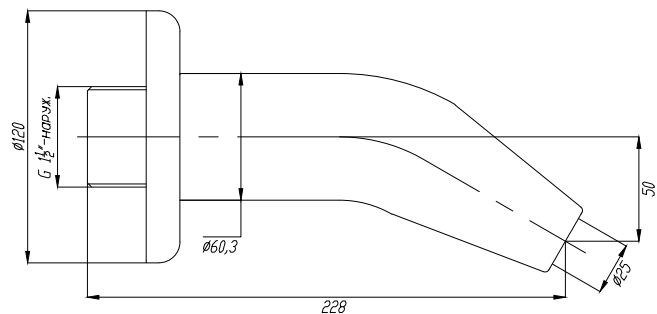
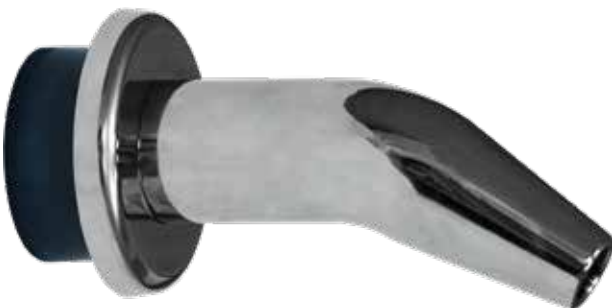
Code	A	B	C
VP.50	450	600	473
VP.10	898	1051	673

Water Cannon Nozzles



Code AISI-304	Code AISI-316	Name
NVP.01	NVP.01/1	Multi-hole nozzle
NVP.02	NVP.02/1	Slot nozzle
NVP.03	NVP.03/1	Cone nozzle

Inwall Water Cannon



Code AISI-304	Code AISI-316	Name	Water flow m3/h
VPS.01	VPS.01/1	Inwall water cannon	12

AIR BUBBLE ELEMENTS

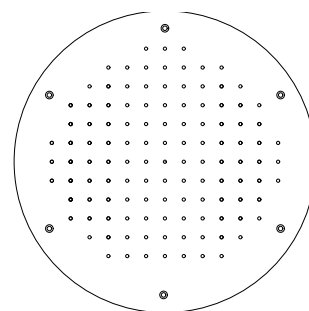
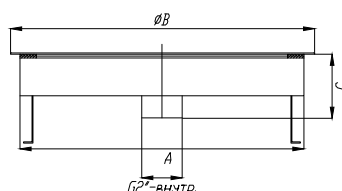
Air bubble elements are designed for underwater massage with direct air flows. Diffusing the air supplied by the compressor, they saturate the flow with millions of small bubbles, which makes the massage effect more delicate.

Air bubble loungers and recliners can be installed in hot tubs or certain SPA areas of the pool to create a «pearl bath» effect.

Air bubble elements (or «geysers») are placed at the pool bottom at a depth of no more than 1.5 m, otherwise the compressor performance may decrease. The compressor performance depends on the depth of the installation of the element, its size and recommended air flow.

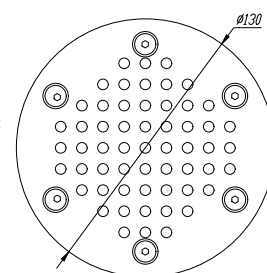
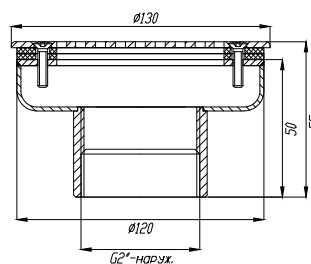
When installing air massage devices, it is necessary to provide an air feeder loop above the water level in order to prevent water from entering the compressor.

Circular Air Bubble Element



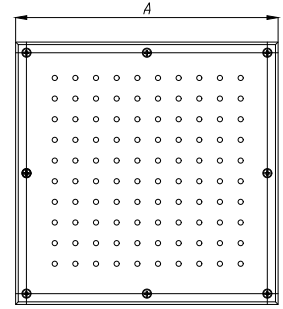
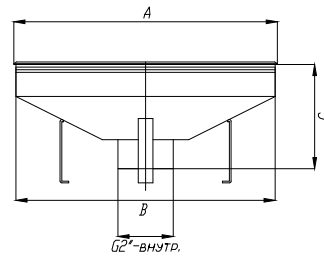
Pool Coating	Code AISI-304	Code AISI-316	Name	Air flow m ³ /h
Tile	PA.30.3	PA.30.3/1	Circular element d.300	25
	PA.40.3	PA.40.3/1	Circular element d.400	50
	PA.48.3	PA.48.3/1	Circular element d.480	70
Liner	PA.30.4	PA.30.4/1	Circular element d.300	25
	PA.40.4	PA.40.4/1	Circular element d.400	50
	PA.48.4	PA.48.4/1	Circular element d.480	70

Code	A	B	C
PA.30.3	300	320	55
PA.40.3	380	400	55
PA.48.3	455	480	55
PA.30.4	300	320	60
PA.40.4	380	400	60
PA.48.4	455	480	60



Pool Coating	Code AISI-304	Code AISI-316	Name	Air flow m ³ /h
Tile	PA.12.1	PA.12.1/1	Circular element d.120	20
Liner	PA.12.2	PA.12.2/1	Circular element d.120	20

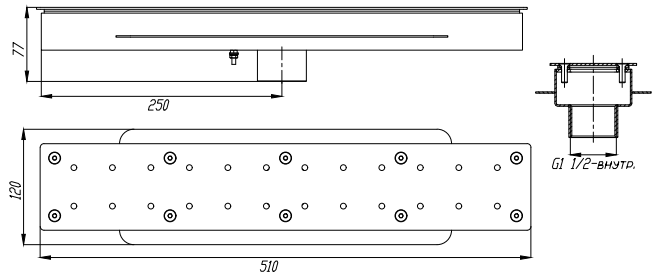
Square Air Bubble Element



Pool Coating	Code AISI-304	Code AISI-316	Name	Air flow m ³ /h
Tile	PA.30.1	PA.30.1/1	Square element 300x300	30
	PA.40.1	PA.40.1/1	Square element 400x400	60
	PA.50.1	PA.50.1/1	Square element 500x500	100
	PA.60.1	PA.60.1/1	Square element 600x600	140
	PA.80.1	PA.80.1/1	Square element 800x800	170
Liner	PA.30.2	PA.30.2/1	Square element 300x300	30
	PA.40.2	PA.40.2/1	Square element 400x400	60
	PA.50.2	PA.50.2/1	Square element 500x500	100
	PA.60.2	PA.60.2/1	Square element 600x600	140
	PA.80.2	PA.80.2/1	Square element 800x800	170

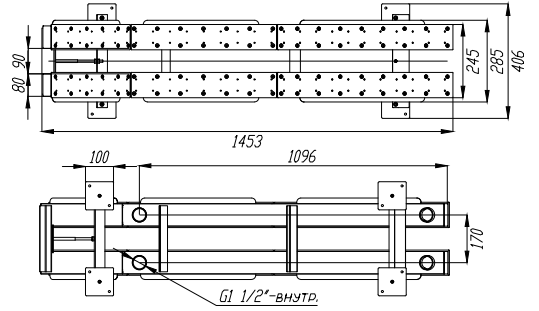
Code	A	B	C
PA.30.1	305	300	105
PA.40.1	405	400	105
PA.50.1	500	485	105
PA.60.1	610	600	105
PA.80.1	810	800	105
PA.30.2	305	300	110
PA.40.2	405	400	110
PA.50.2	500	485	110
PA.60.2	610	600	110
PA.80.2	810	800	110

Аэромассажный элемент



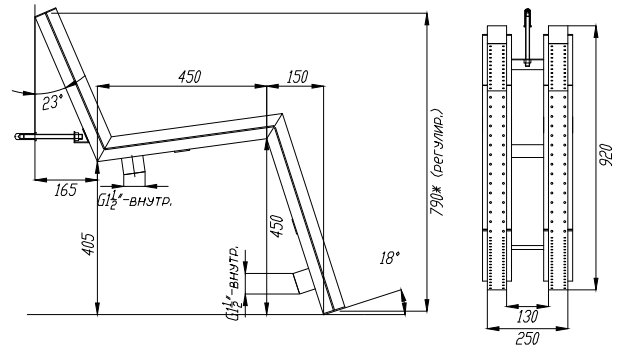
Pool Coating	Code AISI-304	Code AISI-316	Name	Air flow m ³ /h
Плитка	ЛА.03.1/1	ЛА.03.1	Аэромассажный элемент 500x80	20
Пленка	ЛА.03.2/1	ЛА.03.2	Аэромассажный элемент 500x80	20

Air Bubble Lounger



Pool Coating	Code AISI-304	Code AISI-316	Name	Air flow m ³ /h
Tile	LA.02.0	LA.02.0/1	Air bubble lounger	140
Liner	LA.02.2	LA.02.2/1	Air bubble lounger	140

Air Bubble Recliner



Pool Coating	Code AISI-304	Code AISI-316	Name	Air flow m ³ /h
Tile	LA.01.0	LA.01.0/1	Air bubble recliner	140
Liner	LA.01.2	LA.01.2/1	Air bubble recliner	140

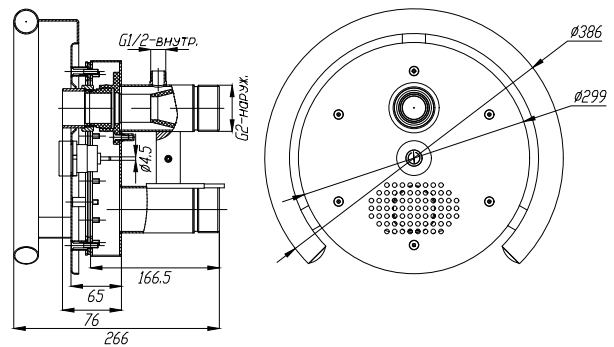
COUNTER CURRENT UNITS

Counter current units are designed to create an artificial current - a powerful direct flow that allows you to «swim staying in place» which broadens the opportunities for sport exercises even in a small pool. The handrail on the front panel allows you to use the counter current unit as a massage device. Counter current units are suitable for pools with any type of coating.

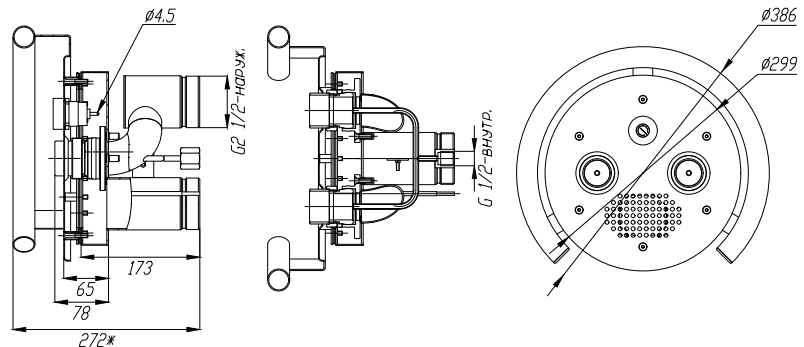
Counter current units are available in different flow capacities, front panel and outlet designs. The control is carried out using a pneumatic or piezoelectric sensor push button, depending on the model.

The set includes an embedded part with a mirror-polished front panel. The counter current unit can be additionally equipped with an air adjuster, which can be used to regulate the amount of air mixed into the water flow. Air adjuster can be installed on the side of the pool.

Counter Current Unit with Pneumatic Start Button

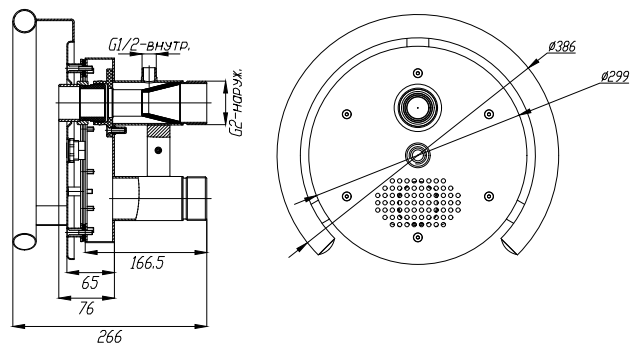


Code AISI-304	Code AISI-316	Name	Water flow m³/h
PT.50.0	PT.50.0/1	1-Nozzle unit with pneumatic push button	50

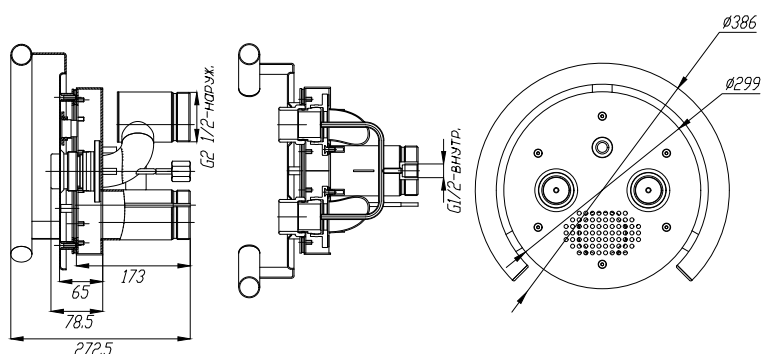


Code AISI-304	Code AISI-316	Name	Water flow m³/h
PT.75.0	PT.75.0/1	2-Nozzle unit with pneumatic push button	75

Counter Current Unit with Piezoelectric Start Button

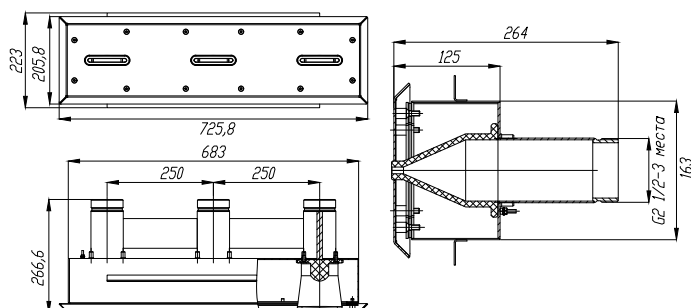


Code AISI-304	Code AISI-316	Name	Water flow m ³ /h
PT.50.1	PT.50.1/1	1-Nozzle unit with piezoelectric push button	50



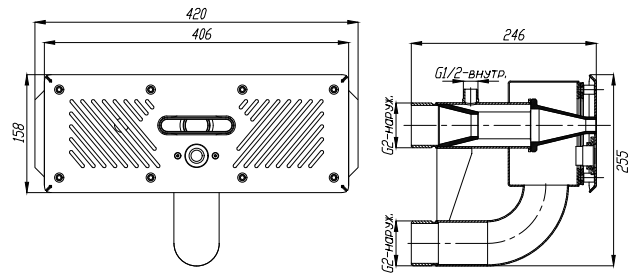
Code AISI-304	Code AISI-316	Name	Water flow m ³ /h
PT.75.1	PT.75.1/1	2-Nozzle unit with piezoelectric push button	75

Narrow Counter Current Unit

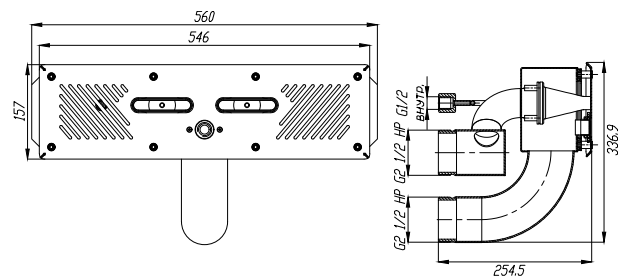


Code AISI-304	Code AISI-316	Name	Water flow m ³ /h
PT.150.0	PT.150.0/1	Narrow 3-nozzle unit	150

Narrow Counter Current Unit with Piezoelectric Start Button



Code AISI-304	Code AISI-316	Name	Water flow m ³ /h
PTU.50.1	PTU.50.1/1	Narrow 1-nozzle unit with piezoelectric push button	50



Code AISI-304	Code AISI-316	Name	Water flow m ³ /h
PTU.75.1	PTU.75.1/1	Narrow 2-nozzle unit with piezoelectric push button	75

XENO ZONE

Water Technologies and Equipment

POOL BASIN EQUIPMENT



SKIMMERS



MAIN DRAINS



SUCTION OUTLETS



INLETS



**LEVEL
CONTROLLERS**



WALL CONDUITS

SKIMMERS

Skimmers are designed to draw water from the pool and pass it through to the filtration system, as well as collecting debris from the water surface. It is recommended to take 70-75% of the total circulating water flow through the skimmers, and the remaining 25-30% of the flow through the bottom drain.

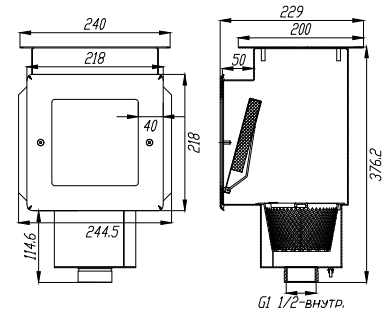
Built-in skimmers are to be embedded in the concrete pool sides a little below the waterline. The number of skimmers required depends on the size of the pool and the square of the water surface. Skimmers can be installed both in tiled and liner pools. Models for liner pools have an additional clamping flange and rubber sealing, which ensures complete waterproofing of the pool basin.

Skimmers are made in several modifications: for a wide or narrow side, with water level controller (mechanical or electronic) and overflow.

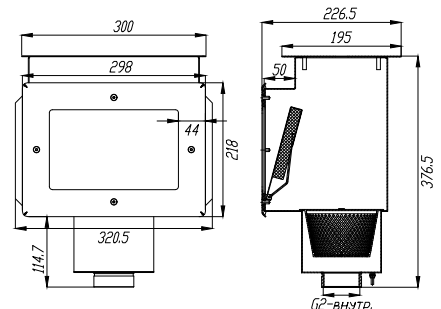
Front panel, lid and floating weir are made of mirror polished stainless steel. The ABS-plastic filter basket is included in the package.

Through a special nozzle it is possible to connect a hand vacuum cleaner.

Standard Skimmer



Pool Coating	Code AISI-304	Code AISI-316	Name	S _{max} water surface area, m ²
Tile	SK.15.1	SK.15.1/1	Skimmer 1 1/2" internal	15
Liner	SK.15.2	SK.15.2/1	Skimmer 1 1/2" internal	15

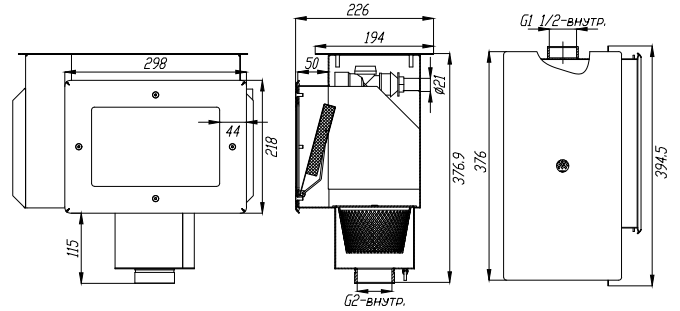


Pool Coating	Code AISI-304	Code AISI-316	Name	S _{max} water surface area, m ²
Tile	SK.20.1	SK.20.1/1	Skimmer 2" internal	25
Liner	SK.20.2	SK.20.2/1	Skimmer 2" internal	25

Skimmer with Mechanical Water Level Controller and Overflow

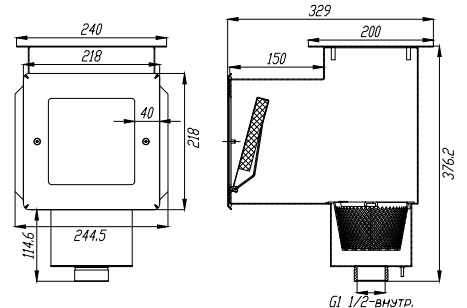
The skimmer is equipped with a mechanical valve that allows maintaining a predetermined water level in the pool, as well as an emergency overflow to drain excess water.

Overflow connection - an internal thread 1 1/2", autofilling pipeline connection - an external thread 1/2". The ABS-plastic filter basket is included in the package.

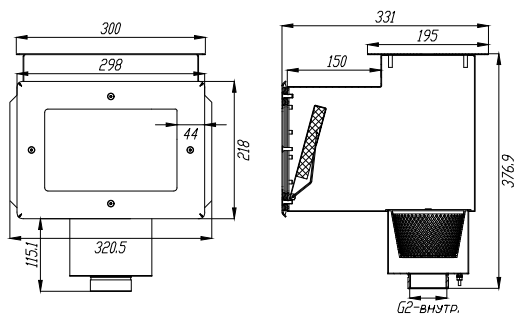


Pool Coating	Code AISI-304	Code AISI-316	Name	S _{max} water surface area, m ²
Tile	SK.15.3	SK.15.3/1	Skimmer with level controller 2" internal	25
Liner	SK.15.4	SK.15.4/1	Skimmer with level controller 2" internal	25

Long Throat Skimmer



Pool Coating	Code AISI-304	Code AISI-316	Name	S _{max} water surface area, m ²
Tile	SK.15.5	SK.15.5/1	Long throat skimmer 1 1/2" internal	15
Liner	SK.15.6	SK.15.6/1	Long throat skimmer 1 1/2" internal	15



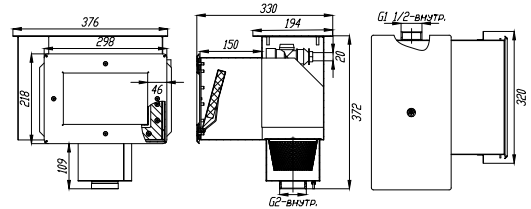
Pool Coating	Code AISI-304	Code AISI-316	Name	S _{max} water surface area, m ²
Tile	SK.20.3	SK.20.3/1	Long throat skimmer 2" internal thread	25
Liner	SK.20.4	SK.20.4/1	Long throat skimmer 2" internal thread	25

Long Mouth Skimmer with Mechanical Water Level Controller and Overflow

Skimmers with long mouth are designed for installation in swimming pools with wide sides. The length of mouth is 150 mm.

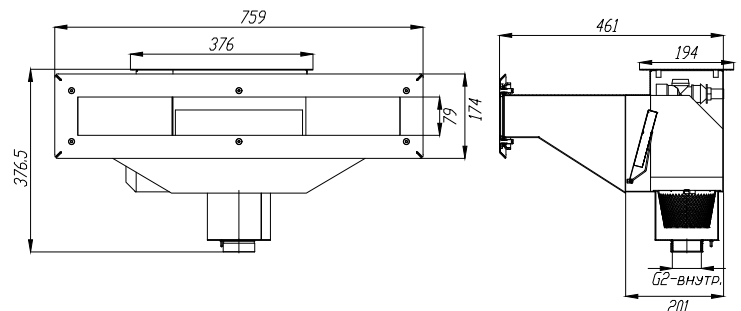
The skimmer is equipped with a mechanical valve that allows maintaining a predetermined water level in the pool, as well as an emergency overflow to drain excess water.

Overflow connection - an internal thread 1 1/2", autofilling pipeline connection - an external thread 1/2". The ABS-plastic filter basket is included in the package.



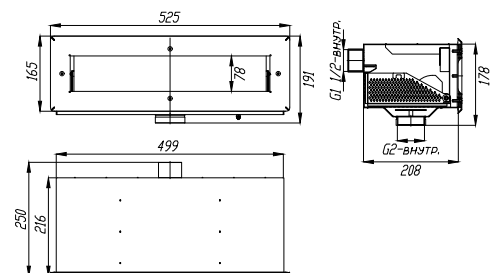
Pool Coating	Code AISI-304	Code AISI-316	Name	S _{max} water surface area, m ²
Tile / Liner	SK.20.5	SK.20.5/1	Long mouth skimmer with level controller 2" internal	25

Wide Mouth Skimmer with Mechanical Water Level Controller and Overflow



Pool Coating	Code AISI-304	Code AISI-316	Name	S _{max} water surface area, m ²
Tile / Liner	SK.15.8	SK.15.8/1	Wide mouth skimmer with level controller 2" internal	40

Narrow Mouth Skimmer



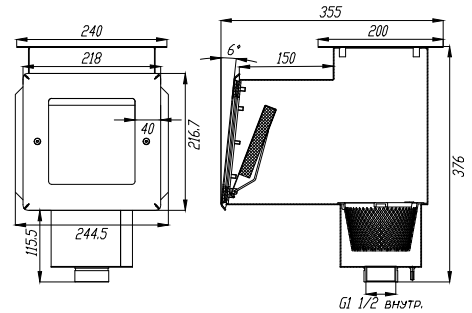
Pool Coating	Code AISI-304	Code AISI-316	Name	S _{max} water surface area, m ²
Tile / Liner	SK.40.0	SK.40.0/1	Narrow mouth skimmer 2" internal	40

Skimmers for Composite Pools

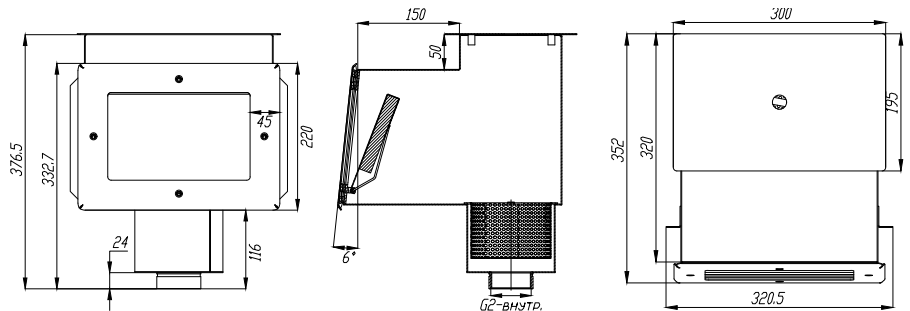
Skimmers for composite (fiberglass) pools are made on the basis of standard skimmers with long mouth. The length of the mouth (about 150 mm) and 6 degrees slope of the front panel, corresponding to the geometry of the composite basins, allow them to be installed in them.

Models with water level controller are equipped with a mechanical valve that allows maintaining a predetermined water level in the pool, as well as an emergency overflow to drain excess water.

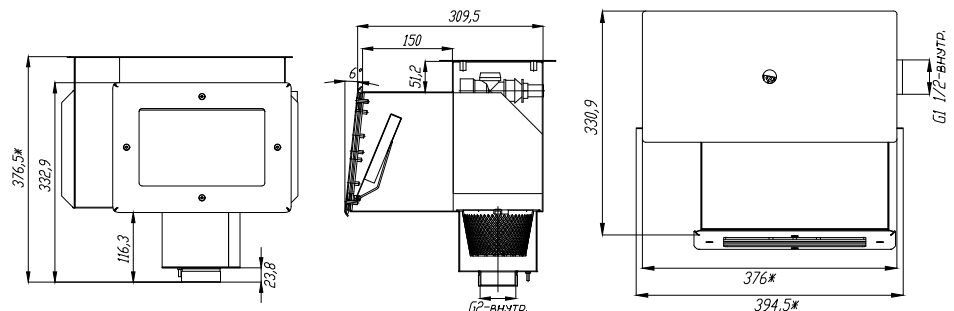
Overflow connection - an internal thread 1 1/2", autofilling pipeline connection - an external thread 1/2". The ABS-plastic filter basket is included in the package.



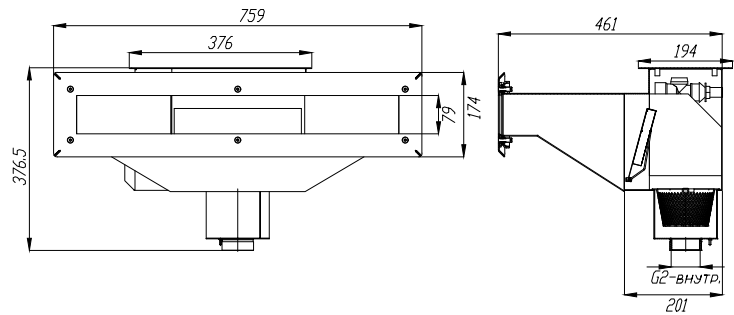
Pool Coating	Code AISI-304	Code AISI-316	Name	S _{max} water surface area, m ²
Tile / Liner	SK.15.6.1	SK.15.6.1/1	Long mouth skimmer 1 1/2" internal	15



Pool Coating	Code AISI-304	Code AISI-316	Name	S _{max} water surface area, m ²
Tile / Liner	SK.20.4.1	SK.20.4.1/1	Long mouth skimmer 2" internal	25



Pool Coating	Code AISI-304	Code AISI-316	Name	S _{max} water surface area, m ²
Tile / Liner	SK.20.5.1	SK.20.5.1/1	Long mouth skimmer with mechanical water level controller 2" internal	25

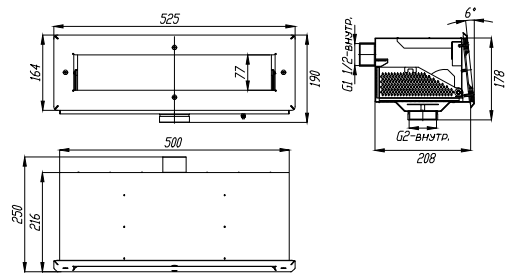


Pool Coating	Code AISI-304	Code AISI-316	Name	S _{max} water surface area, m ²
Tile / Liner	SK.15.8.1	SK.15.8.1/1	Wide mouth skimmer with mechanical water level controller 2" internal	25

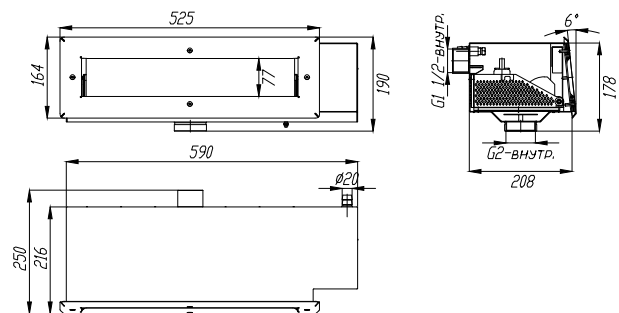
Narrow Skimmers for Composite Pools

The 6 degrees slope of the front panel, corresponding to the geometry of the composite basins, as well as the absence of a top lid, allow them to be installed on the side of composite pools

Models with electronic water level controller are equipped with a built-in float sensor and an electronic control unit. It is possible to connect the electrovalve of the water supply line and electrically driven cock to the control unit.



Pool Coating	Code AISI-304	Code AISI-316	Name	S _{max} water surface area, m ²
Tile / Liner	SK.40.1	SK.40.1/1	Narrow skimmer 2" internal	25



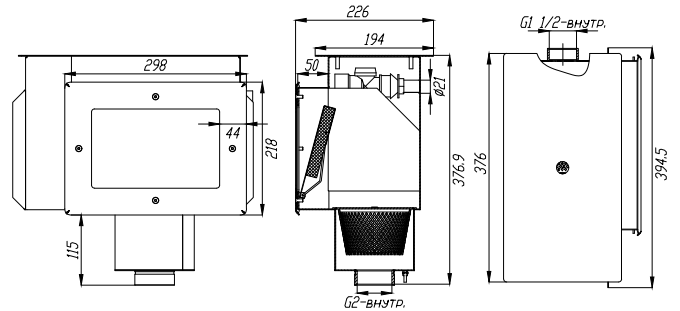
Pool Coating	Code AISI-304	Code AISI-316	Name	S _{max} water surface area, m ²
Tile / Liner	SK.41.1	SK.41.1/1	Narrow skimmer with electronic water level controller 2" internal	25

Skimmer with Electronic Water Level Controller

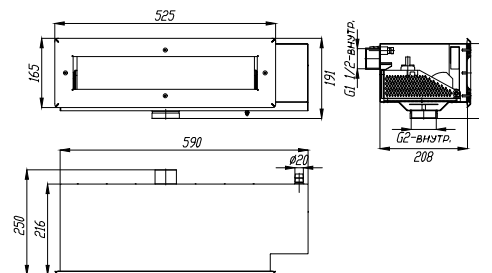
Skimmer with electronic water level control system automatically maintains a predetermined water level in the pool, preventing it from overflow or unacceptable water level decrease, protecting the pump from dry run.

The water level in the pool and its topping up is controlled by an electronic control unit. When the unit receives a signal from the water level sensor built into the body of the skimmer, it opens or closes the electrovalve of the water supply line.

The package includes a skimmer with a built-in float sensor and an electronic control unit. It is possible to connect the electrovalve of the water supply line and electrically driven cock to the control unit.



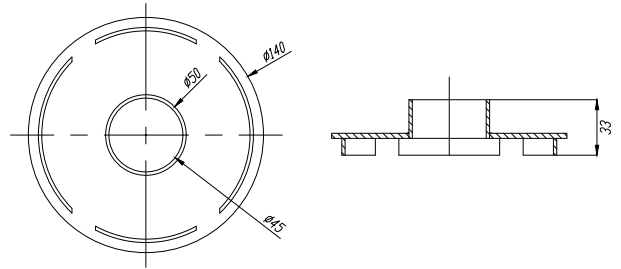
Pool Coating	Code AISI-304	Code AISI-316	Name	S _{max} water surface area, m ²
Tile / Liner	SK.30.0	SK.30.0/1	Skimmer with electronic level controller 2" internal	25



Pool Coating	Code AISI-304	Code AISI-316	Name	S _{max} water surface area, m ²
Tile / Liner	SK.41.0	SK.41.0/1	Narrow skimmer with electronic level controller 2" internal	40

AUXILIARY PARTS FOR SKIMMERS

Vacuum Cleaner Adapter



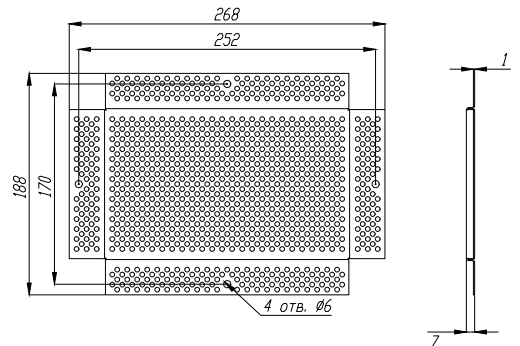
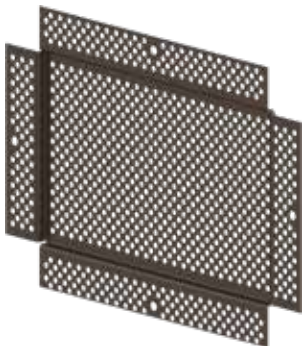
Code AISI-304	Code AISI-316	Name
SK.01.0	SK.01.0/1	Vacuum cleaner adapter

Protective Nets

Stainless steel protective nets are designed to improve safety and convenience of skimmers in the swimming pools.

Installing a protective net on the front window prevents the internal parts of the skimmer from an unauthorized access, and also protects it from large debris, which minimizes the need for cleaning of the internal surfaces.

Protective nets fit all standard skimmers with a connection of 1 1/2 or 2", except for skimmers with a wide throat and narrow skimmers. The nets are universally suitable for any pool coating and can be fastened with bolts together with the front panel.



Code AISI-304	Code AISI-316	Name
SK.02.1	SK.02.1/1	Protective net for skimmers with thread connection 1 1/2"
SK.02.2	SK.02.2/1	Protective net for skimmers with thread connection 2"

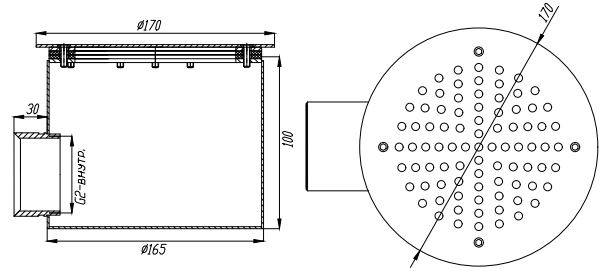
MAIN DRAINS

Main drains are designed for emptying the pool, as well as taking part of the water to the filtration system. Drains should be installed in the lowest part of the pool bottom.

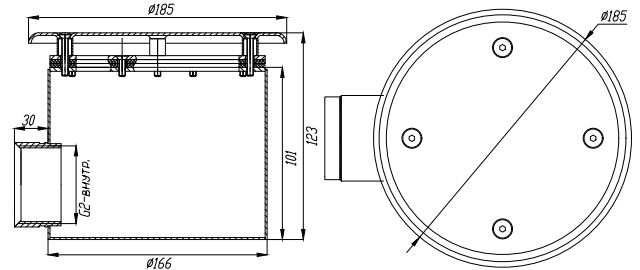
It is recommended to take 70-75% of the total circulating water flow through the skimmers, and the remaining 25-30% of the flow through the bottom drain.

Main drains can be installed both in tiled and liner pools. Models for liner pools have an additional clamping flange and rubber sealing, which ensures complete waterproofing of the pool basin.

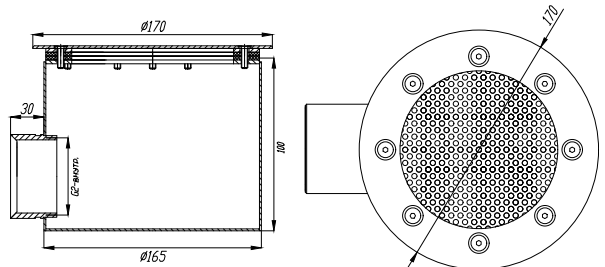
Circular Main Drains



Pool Coating	Code AISI-304	Code AISI-316	Name	Flow capacity, m ³ /h
Tile	SD.60.1	SD.60.1/1	Circular main drain d.165x100 2" internal	20
Liner	SD.60.2	SD.60.2/1	Circular main drain d.165x100 2" internal	20

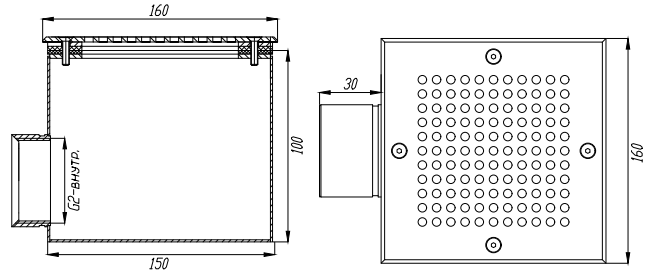


Pool Coating	Code AISI-304	Code AISI-316	Name	Flow capacity, m ³ /h
Tile	SD.65.1	SD.65.1/1	Circular main drain with antivortex cover d.165x100 2" internal	20
Liner	SD.65.2	SD.65.2/1	Circular main drain with antivortex cover d.165x100 2" internal	20

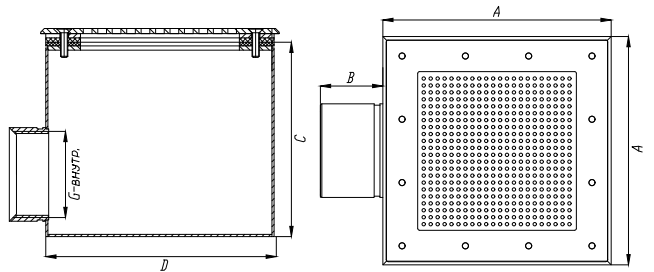


Pool Coating	Code AISI-304	Code AISI-316	Name	Flow capacity, m ³ /h
Tile	SD.65.3	SD.65.3/1	Circular main drain with mesh grille d.165x100 2" internal	20
Liner	SD.65.4	SD.65.4/1	Circular main drain with mesh grille d.165x100 2" internal	20

Square Main Drains

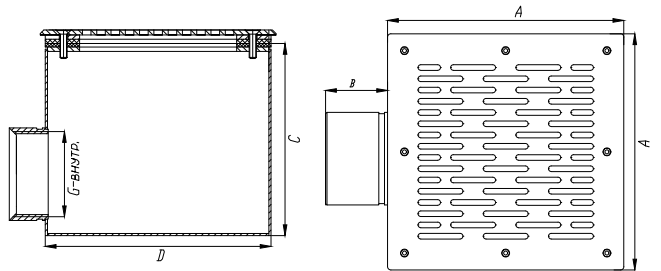


Pool Coating	Code AISI-304	Code AISI-316	Name	Flow capacity, m ³ /h
Tile	SD.50.1	SD.50.1/1	Square main drain 150x150x100 2" internal	20
Liner	SD.50.2	SD.50.2/1	Square main drain 150x150x100 2" internal	20



Pool Coating	Code AISI-304	Code AISI-316	Name	Flow capacity, m ³ /h
Tile / Liner	SD.25.2	SD.25.2/1	Square main drain with mesh grille 250x250x120 2 1/2" internal	30
	SD.50.4	SD.50.4/1	Square main drain with mesh grille 250x250x120 2 1/2" internal	20

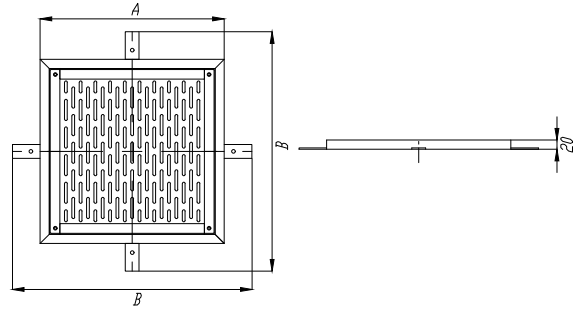
Code	A	B	C	D	G
SD.25.2	260	35	120	250	2,5"
SD.50.4	160	30	100	150	G2"



Pool Coating	Code AISI-304	Code AISI-316	Name	Flow capacity, m ³ /h
Tile	SD.20.1	SD.20.1/1	Square main drain with grille 200x200x120 2 1/2" internal	30
	SD.35.1	SD.35.1/1	Square main drain with grille 350x350x150 3" internal	40
Liner	SD.20.2	SD.20.2/1	Square main drain with grille 200x200x120 2 1/2" internal	30
	SD.35.2	SD.35.2/1	Square main drain with grille 350x350x150 3" internal	40

Code	A	B	C	D	G
SD.20.1	210	30	120	200	2,5"
SD.35.1	370	40	150	350	3"
SD.20.2	210	30	120	200	2,5"
SD.35.2	370	40	150	350	3"

Main Drain Grille

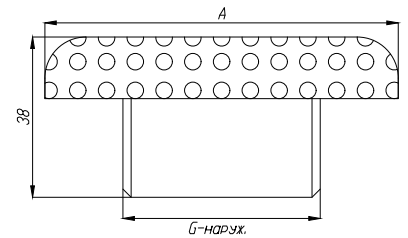


Code AISI-304	Code AISI-316	Name
RD.30.1	RD.30.1/1	Main drain grille 300x300
RD.40.1	RD.40.1/1	Main drain grille 400x400

Code	A	B
RD.30.1	300	420
RD.40.1	400	520

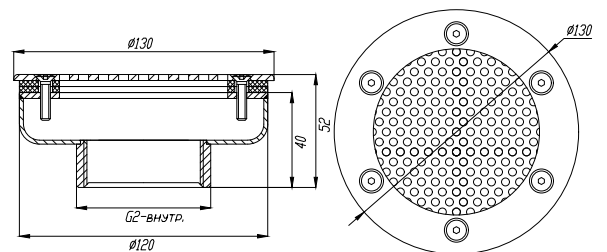
SUCTION OUTLETS

Suction outlets are designed to draw water from the pool and pass it through to the filtration system, as well as feeding hydromassage systems, waterfalls and countercurrent units. Suction outlets can be installed both at the bottom or in the walls of the pool basin.

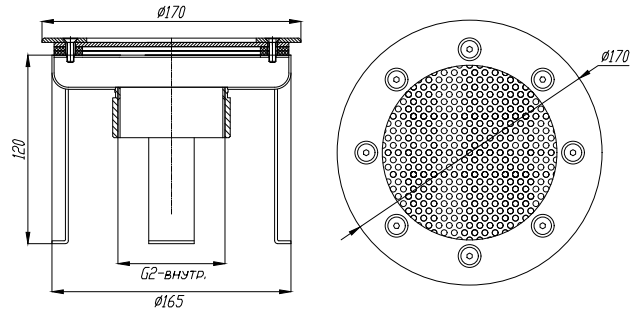


Pool Coating	Code AISI-304	Code AISI-316	Name	Flow capacity, m ³ /h	Code	A	G
Tile	VZ.525.0	VZ.525.0/1	Suction outlet d.250 2 1/2" external	30	VZ.525.0	250	G2,5"
	VZ.625.0	VZ.625.0/1	Suction outlet d.165 2 1/2" external	30	VZ.625.0	165	G2,5"
	VZ.220.0	VZ.220.0/1	Suction outlet d.125 2" external	20	VZ.220.0	125	G2,0"
	VZ.815.0	VZ.815.0/1	Suction outlet d.85 1 1/2" external	10	VZ.815.0	85	G1,5"

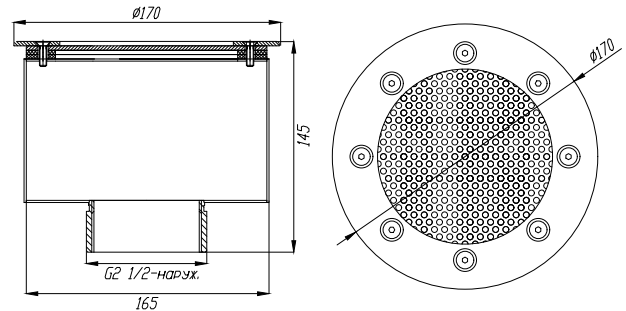
Suction Outlets with Mesh Grille



Pool Coating	Code AISI-304	Code AISI-316	Name	Flow capacity, m ³ /h
Tile / Liner	VZ.120.4	VZ.120.4/1	Suction outlet d.120 2" internal	20

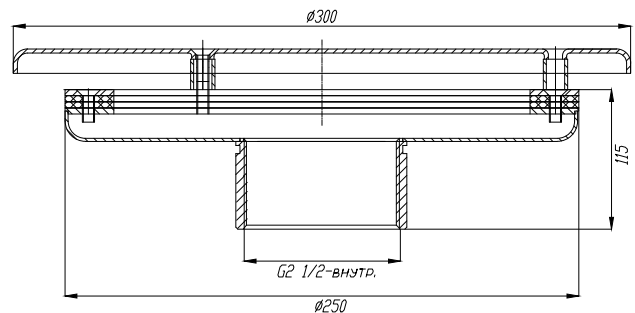


Pool Coating	Code AISI-304	Code AISI-316	Name	Flow capacity, m ³ /h
Tile	VZ.620.3	VZ.620.3/1	Suction outlet with mesh grille d.165 2" internal	20
Liner	VZ.620.4	VZ.620.4/1	Suction outlet with mesh grille d.165 2" internal	20

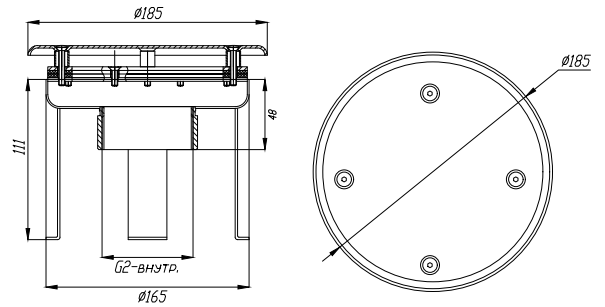


Pool Coating	Code AISI-304	Code AISI-316	Name	Flow capacity, m ³ /h
Tile	VZ.625.3	VZ.625.3/1	Suction outlet with mesh grille d.165x100 2 1/2" external	30
Liner	VZ.625.4	VZ.625.4/1	Suction outlet with mesh grille d.165x100 2 1/2" external	30

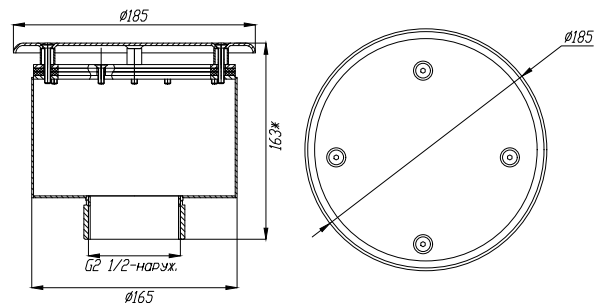
Suction Outlet with Antivortex Cover



Pool Coating	Code AISI-304	Code AISI-316	Name	Flow capacity, m ³ /h
Tile	VZ.525.1	VZ.525.1/1	Suction outlet with antivortex cover d.250 2 1/2" internal	30
Liner	VZ.525.2	VZ.525.2/1	Suction outlet with antivortex cover d.250 2 1/2" internal	30



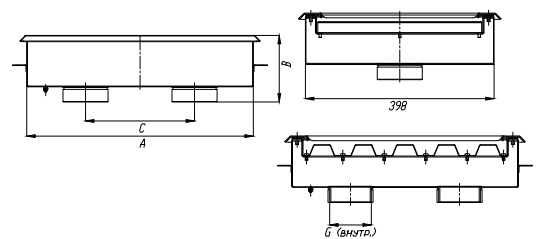
Pool Coating	Code AISI-304	Code AISI-316	Name	Flow capacity, m ³ /h
Tile	VZ.620.1	VZ.620.1/1	Suction outlet with antivortex cover d.165 2" internal	20
Liner	VZ.620.2	VZ.620.2/1	Suction outlet with antivortex cover d.165 2" internal	20



Pool Coating	Code AISI-304	Code AISI-316	Name	Flow capacity, m ³ /h
Tile	VZ.625.1	VZ.625.1/1	Suction outlet with antivortex cover d.165x100 2 1/2" external	30
Liner	VZ.625.2	VZ.625.2/1	Suction outlet with antivortex cover d.165x100 2 1/2" external	30

Square Suction Outlets with Mesh Grille

High-capacity suction outlets are designed to collect water for water features with high water consumption (slides, counter-currents, hydromassage jets). They can also be installed on the bottom and used as main drains. The special design of the mesh grille ensures safe operation reducing the suction risk.

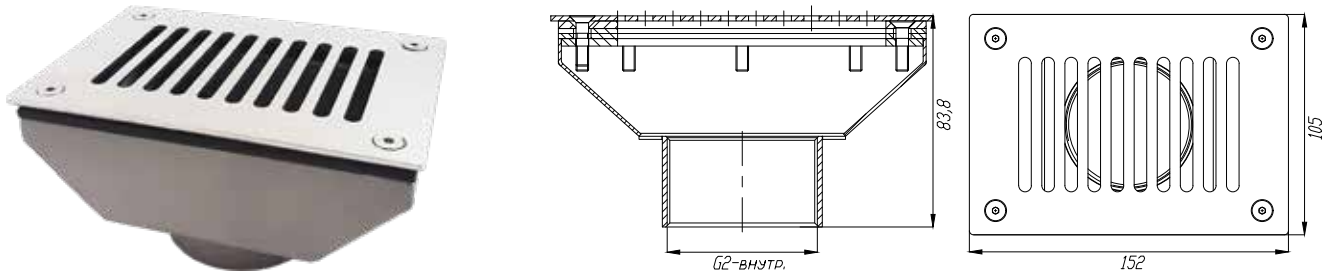


Code	A	B	C	G
VZ.960.2	398	136	170	2 x 2,5"
VZ.990.2	478	140	230	2 x 3"
VZ.9120.2	568	146	260	2 x 4"

Pool Coating	Code AISI-304	Code AISI-316	Name	Flow capacity, m ³ /h
Tile / Liner	VZ.960.2	VZ.960.2/1	Square suction outlet with mesh grille 400x400 2x2,5" internal	60
	VZ.990.2	VZ.990.2/1	Square suction outlet with mesh grille 480x400 2x3" internal	90
	VZ.9120.2	VZ.9120.2/1	Square suction outlet with mesh grille 570x400 2x4" internal	120

Overflow Drain Outlet

Drain outlets are designed to draw water from the overflow and pass it through to the filtration system.



Pool Coating	Code AISI-304	Code AISI-316	Name	Flow capacity, m ³ /h
Tile	VZP.150.1	VZP.150.1/1	Overflow drain outlet 2" internal	20
Liner	VZP.150.2	VZP.150.2/1	Overflow drain outlet 2" internal	20

RETURN NOZZLES

Return nozzles are designed to return water to the pool after filtration system and can be installed both in the bottom or in the walls of the pool basin. Models with in-built cone diffusor allow changing the direction of the water flow.

Bottom Nozzles

Bottom nozzles are to be installed in the bottom of the pool basin for better water mixing. The front panels are mirror polished.



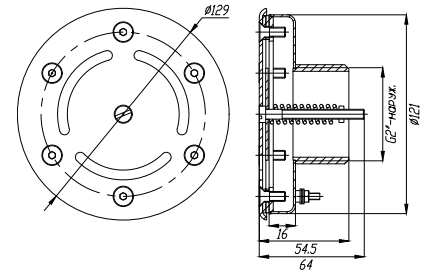
Pool Coating	Code AISI-304	Code AISI-316	Name
Tile	FP.122.1	FP.122.1/1	Bottom nozzle d.120 2" external
Liner	FP.122.2	FP.122.2/1	Bottom nozzle d.120 2" external



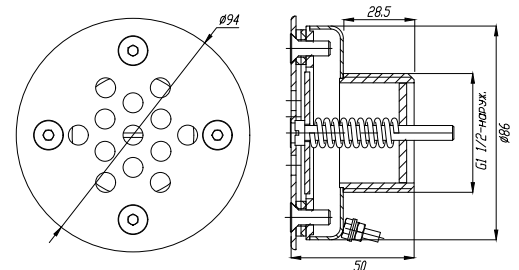
Pool Coating	Code AISI-304	Code AISI-316	Name
Tile	FP.091.1	FP.091.1/1	Bottom nozzle N-200 d.90 1 1/2" external
Liner	FP.091.2	FP.091.2/1	Bottom nozzle N-200 d.90 1 1/2" external

Adjustable Bottom Nozzles

Water flow can be adjusted by a central screw, making it possible to change the flow rate for better water circulation..



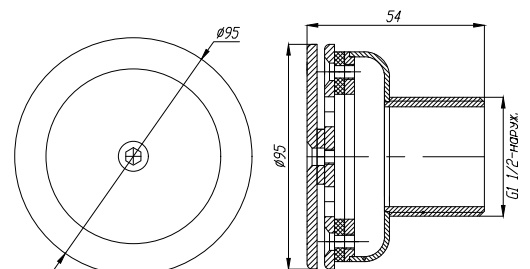
Pool Coating	Code AISI-304	Code AISI-316	Name
Tile	FP.122.3	FP.122.3/1	Adjustable bottom nozzle d.120 2" external
Liner	FP.122.4	FP.122.24/1	Adjustable bottom nozzle d.120 2" external



Pool Coating	Code AISI-304	Code AISI-316	Name
Tile	FP.091.3	FP.091.3/1	Adjustable bottom nozzle N-200 d.90 1 1/2" external
Liner	FP.091.4	FP.091.4/1	Adjustable bottom nozzle N-200 d.90 1 1/2" external

Diffusing Nozzles

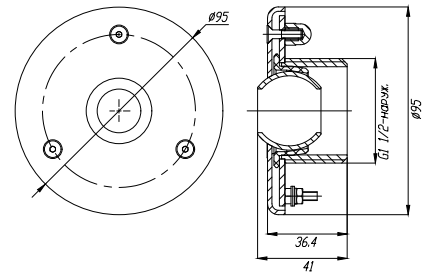
Diffusing nozzles have a side outlet, which ensures better water mixing in the pool basin. Designed for bottom installation. The front panel is mirror polished.



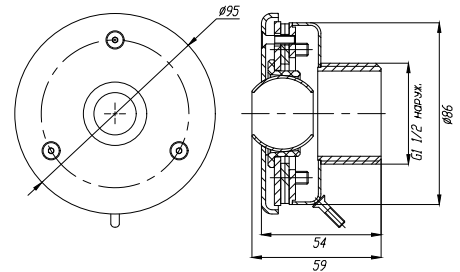
Pool Coating	Code AISI-304	Code AISI-316	Name
Liner	FPb.090.2	FPb.090.2/1	Diffusing nozzle 1 1/2" external

In-Wall Nozzles

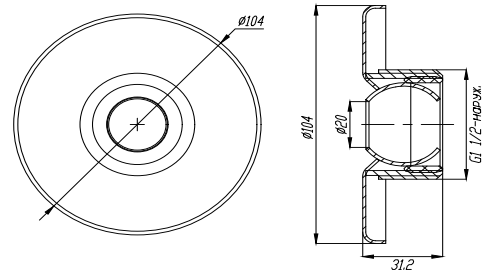
In-wall nozzles return water from the filtration system to the pool basin, creating a surface current. An adjustable cone diffuser allows to change the flow direction.



Pool Coating	Code AISI-304	Code AISI-316	Name
Tile	FP.091.5	FP.091.5/1	In-wall nozzle 1 1/2" external



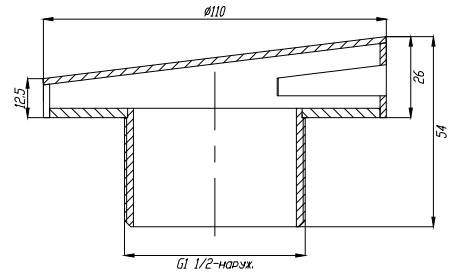
Pool Coating	Code AISI-304	Code AISI-316	Name
Liner	FP.091.6	FP.091.6/1	In-wall nozzle 1 1/2" external



Pool Coating	Code AISI-304	Code AISI-316	Name
Liner	FP.091.7	FP.091.7/1	In-wall nozzle 1 1/2" external

Side Outlet Nozzles

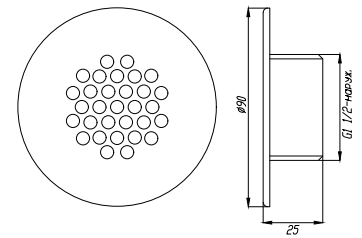
Side outlet nozzles are designed for pools of irregular or intricate shape with a potential for formation of zones of poor circulation. Nozzles can have both in-wall and bottom installation.



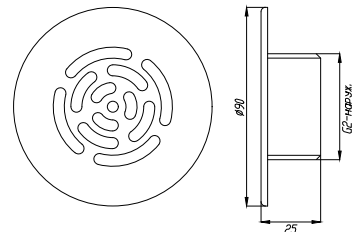
Pool Coating	Code AISI-304	Code AISI-316	Name
Tile	FPb.110.1	FPb.110.1/1	Side outlet nozzle 1 1/2" external

Bubbling Nozzles

Bubbling nozzles are used to return water after the filtration system into the pool basin. Nozzles can have both in-wall and bottom installation.



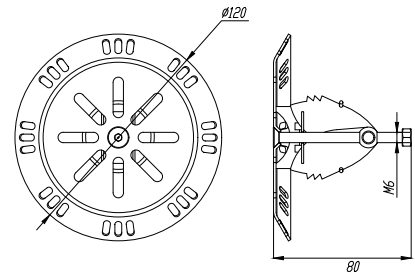
Pool Coating	Code AISI-304	Code AISI-316	Name
Tile	FP.111.3	FP.111.3/1	Bubbling nozzle 1 1/2" external



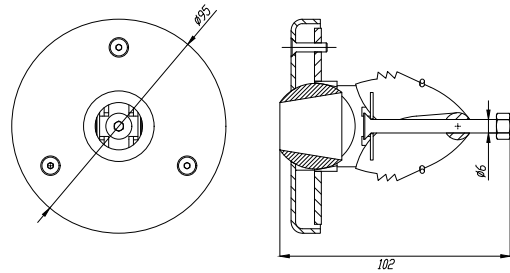
Pool Coating	Code AISI-304	Code AISI-316	Name
Tile	FP.111.4	FP.111.4/1	Bubbling nozzle 2" external

Nozzles with Spacer Fastening

The fastening has three positions which allows to install these nozzles in a plastic PVC pipe of any diameter - 50, 63 or 75 mm. Sharp barbs on the edges of the spacer provide safe fastening. The pattern of the holes on the front panel ensures a diffusing effect.



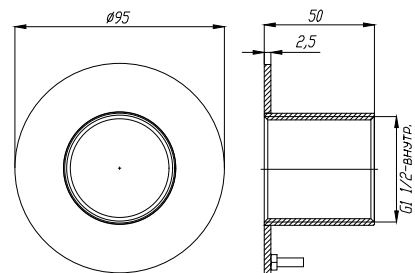
Code AISI-304	Code AISI-316	Name
FR.120.0	FR.120.0/1	Bottom nozzle with spacer fastening



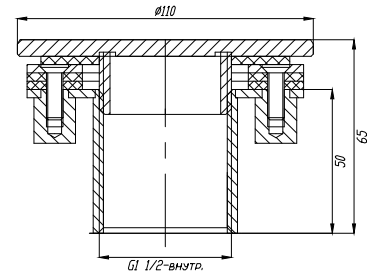
Code AISI-304	Code AISI-316	Name
FR.090.0	FR.090.0/1	Wall nozzle with spacer fastening

Vacuum Suction Nozzles

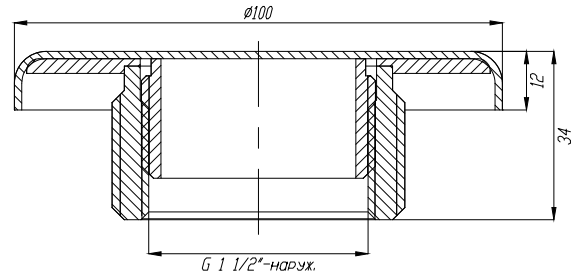
Vacuum suction nozzles are designed to connect a vacuum cleaner. The mirror polished safety plug is to be fitted when the point is not in use.



Pool Coating	Code AISI-304	Code AISI-316	Name
Tile	FP.111.1	FP.111.1/1	Vacuum suction nozzle 1 1/2" internal
	FP.001.0	FP.001.0/1	Vacuum suction nozzle plug

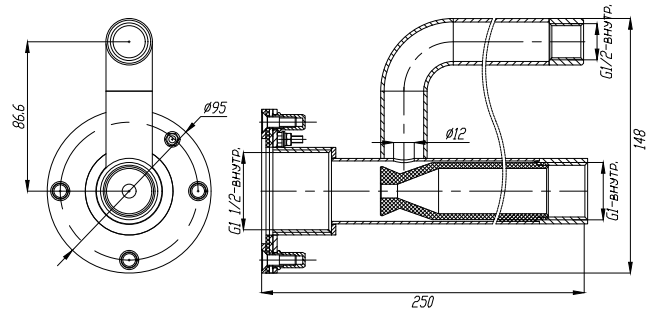


Pool Coating	Code AISI-304	Code AISI-316	Name
Liner	FP.111.2	FP.111.2/1	Vacuum suction nozzle 1 1/2'' internal
	FP.001.0	FP.001.0/1	Vacuum suction nozzle plug



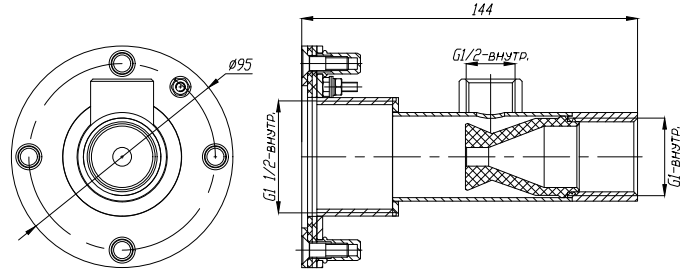
Pool Coating	Code AISI-304	Code AISI-316	Name
Tile	FP.111.5	FP.111.5/1	Vacuum suction nozzle 2'' external
	FP.002.0	FP.002.0/1	Vacuum suction nozzle plug

HYDROMASSAGE JETS



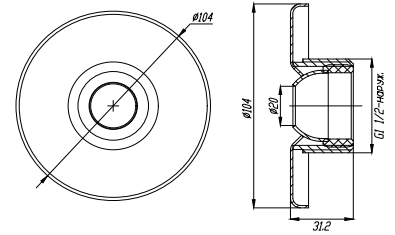
Code AISI-304	Code AISI-316	Name	Flow Capacity, m ³ /h
FG.07	FG.07/1	Hydromassage jet (body) 1'' internal*	7

* Front panel FP.091.8 is supplied separately

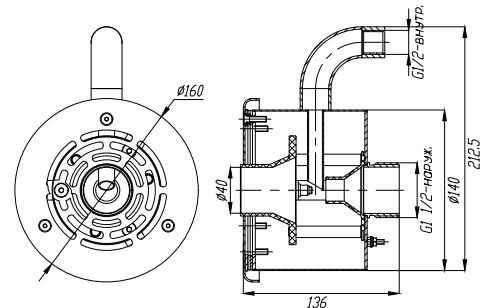


Code AISI-304	Code AISI-316	Name	Flow Capacity, m ³ /h
FGk.07	FGk.07/1	Short hydromassage jet (body) 1" internal*	7

* Front panel FP.091.8 is supplied separately

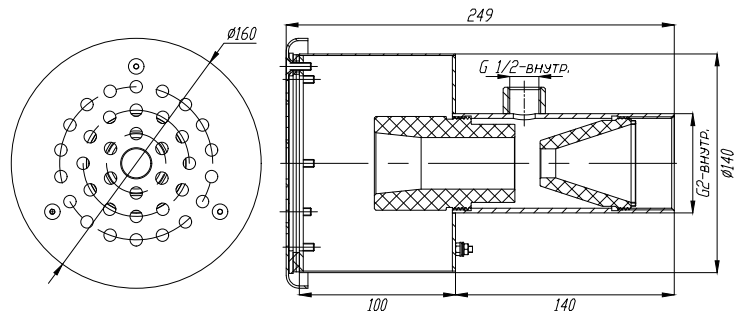


Code AISI-304	Code AISI-316	Name
FP.091.8	FP.091.8/1	Front panel 1 1/2" external



Code AISI-304	Code AISI-316	Name	Flow Capacity, m ³ /h
FG.12	FG.12/1	Hydromassage jet 1 1/2" external*	12-15

* Supplied with front panel

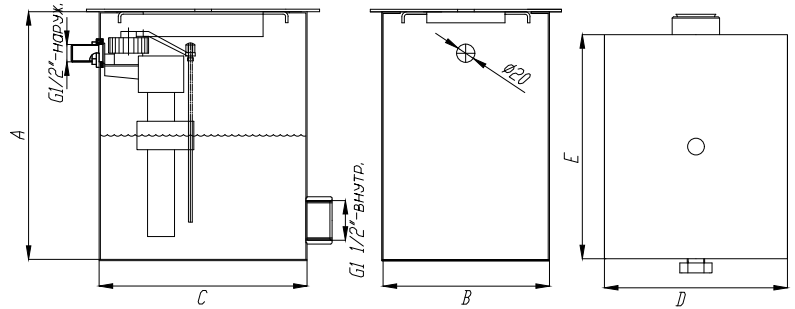


Code AISI-304	Code AISI-316	Name	Flow Capacity, m ³ /h
FG.20	FG.20/1	Hydromassage jet 2" internal*	20-40

* Supplied with front panel

LEVEL CONTROLLERS

Water level controller installed on pool side allows to compensate for the water loss in the pool due to evaporation or waves during its operation. Connection of the water main - an external thread 1/2", the outlet to the pool - an internal thread 1 1/2". The autofill valve is included.

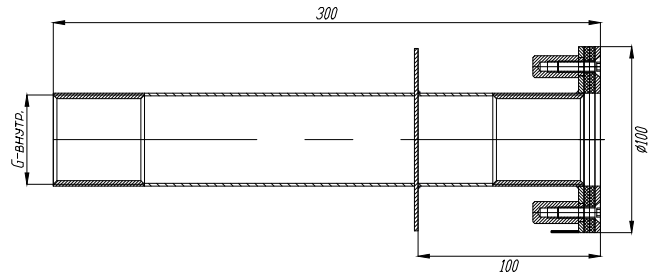


Code AISI-304	Code AISI-316	Name
RU.25.0	RU.25.0/1	Level controller 250x200x300
RU.15.0	RU.15.0/1	Level controller 150x100x300

Code	A	B	C	D	E
RU.25.0	300	200	250	230	280
RU.15.0	300	100	150	150	200

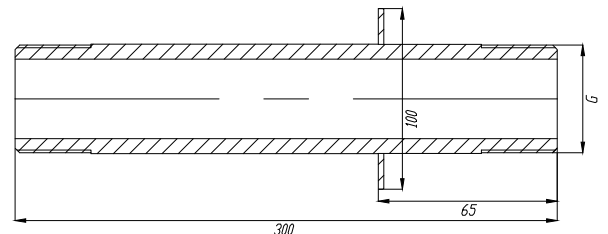
WALL CONDUITS

Wall conduits are laid into the concrete walls of the pool basin and protect the pipeline from destruction during concrete laying.



Pool Coating	Code AISI-304	Code AISI-316	Name
Liner	SP.31.2.2	SP.31.2.2/1	Wall conduit 1 1/2" internal
	SP.32.2.2	SP.32.2.2/1	Wall conduit 2" internal

Code	G (internal)
SP.31.2.2	G1 1/2"
SP.32.2.2	G2"



Pool Coating	Code AISI-304	Code AISI-316	Name
Tile	SP.31.1	SP.31.1/1	Wall conduit 1 1/2" external
	SP.31.2	SP.31.2/1	Wall conduit 1 1/2" internal
	SP.32.1	SP.32.1/1	Wall conduit 2" external
	SP.32.2	SP.32.2/1	Wall conduit 2" internal

Code	G
SP.31.1	G1 1/2" ext
SP.31.2	G1 1/2" int
SP.32.1	G2" ext
SP.32.2	G2" int



XENO ZONE

Water Technologies and Equipment

WATER HEATING



ELECTRIC HEATERS



HEAT EXCHANGERS



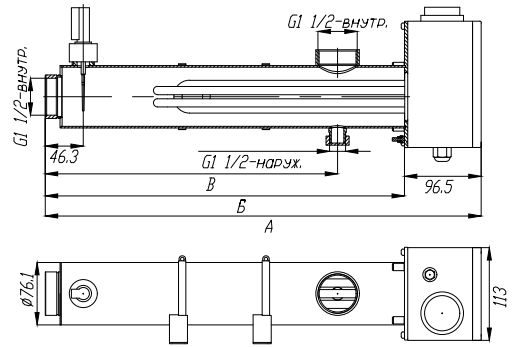
ADAPTERS

ELECTRIC HEATERS

XENOZONE electric heaters are designed to heat water in the swimming pool and maintain its temperature. Electric heaters can be used both in public and private outdoor or indoor pools.

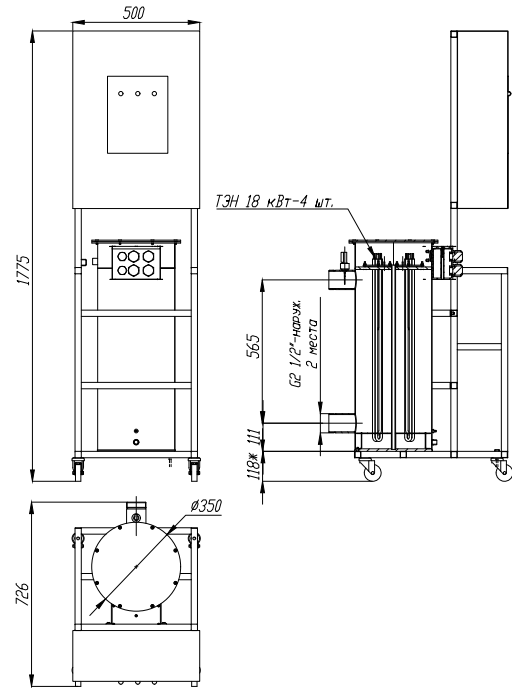
Temperature range of adjustment: +10... +40°. Heaters are equipped with built-in protection - temperature and flow sensors. The temperature of thermostatic switch response: +55°C.

Operating voltage: 230 / 400 V. The 72 kW heater has 4 independent heating elements of 18 kW each.



Code AISI-304	Name
NV.03	Electric heater 3 kW
NV.06	Electric heater 6 kW
NV.09	Electric heater 9 kW
NV.12	Electric heater 12 kW
NV.15	Electric heater 15 kW
NV.18	Electric heater 18 kW

Code	A	Б	B
NV.03	533	441	356
NV.06	533	441	356
NV.09	583	491	406
NV.12	808	716	631
NV.15	808	716	631
NV.18	908	816	731



Code AISI-304	Name
NV.72	Electric heater 72 kW

Replaceable Heating Elements

Tubular heating elements are replaceable spare parts for electric water heaters. The housing material is AISI-304 stainless steel. Service life - 10,000 hours.



Code AISI-304	Name
TEN.03	Heating element 3 kW
TEN.06	Heating element 6 kW
TEN.09	Heating element 9 kW
TEN.12	Heating element 12 kW
TEN.15	Heating element 15 kW
TEN.18	Heating element 18 kW

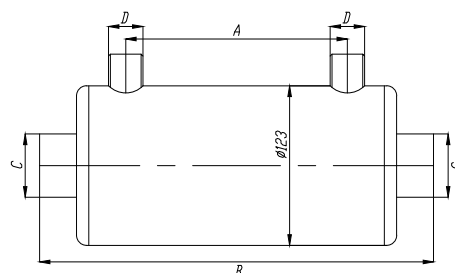
HEAT EXCHANGERS

The water-to-water heat exchanger is designed for heating water in the swimming pools. The heat exchanger is double-circuit, with a primary circuit in the form of a coil for horizontal models and in the form of tubes for vertical models. Heat exchangers are selected based on:

- for outdoor pools: heat exchanger power, kW = pool volume, m³;
- for indoor pools: heat exchanger power, kW = 0.7 x pool volume, m³.

Horizontal Heat Exchangers

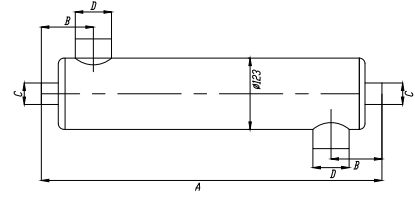
The primary circuit in which the coolant circulates is made in the form of a coil. To achieve the best heat transfer parameters, the model is to be installed in a horizontal position.



Code AISI-304	Name
TO.13.1	Heat exchanger 13 kW (horizontal)
TO.28.1	Heat exchanger 28 kW (horizontal)
TO.40.1	Heat exchanger 40 kW (horizontal)
TO.75.2	Heat exchanger 75 kW (horizontal)

Code	A	B	C	D
TO.13.1	85	235	G1 1/2" ext.	G3/4" ext.
TO.28.1	180	320	G1 1/2" ext.	G3/4" ext.
TO.40.1	235	370	G1 1/2" ext.	G3/4" ext.
TO.75.2	600	765	G2" ext.	G3/4" ext.

Vertical Heat Exchangers



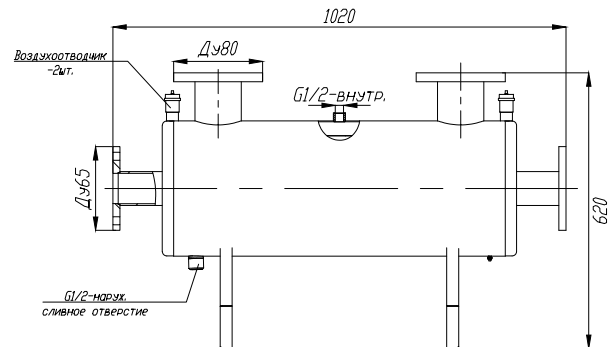
The primary circuit in which the coolant circulates is made in the form of tubes. To achieve the best heat transfer parameters, the model is to be installed in a horizontal position.

Code AISI-304	Name
TO.40.10	Heat exchanger 40 kW (vertical)
TO.60.10	Heat exchanger 60 kW (vertical)
TO.75.10	Heat exchanger 75 kW (vertical)
TO.12.2	Heat exchanger 120 kW (vertical)

Code	A	B	C	D
TO.40.10	360	90	G1" ext.	G1 1/2" ext.
TO.60.10	480	90	G1" ext.	G1 1/2" ext.
TO.75.10	600	85	G1" ext.	G2" ext.
TO.12.2	1065	85	G1" ext.	G2" ext.

Floor-mounted Heat Exchangers

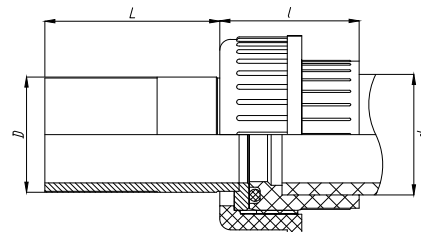
The 200 and 300 kW models have welded supports and designed to be mounted on the floor in a horizontal position. The primary circuit i is made in the form of tubes..



Code AISI-304	Name
TO.200	Heat exchanger 200 kW
TO.300	Heat exchanger 300 kW

ADAPTERS

Split couplings are used for mounting heat exchangers. A stainless steel insert is installed between the heat exchanger and the pipeline and protects PVC pipes from overheating, which can lead to deformation and failure of sealing joints. Threaded connections of two types are available: 1 1/2" and 2".



Code AISI-304	Name
TO.00.3	Split copling with insert d.50 1 1/2" external
TO.00.4	Split copling with insert d.63 2" external

Code	D	L	l	d
TO.00.3	G1 1/2" ext.	65	60	50
TO.00.4	G2" ext.	60	75	63

XENO ZONE

Water Technologies and Equipment

POOL LIGHTING

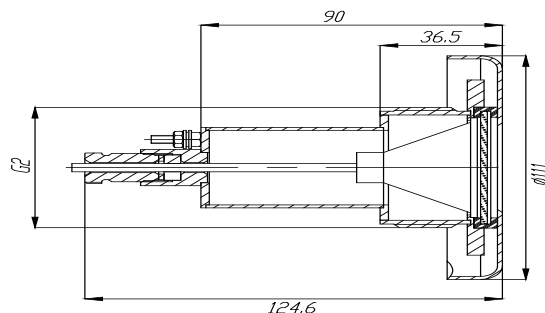


SPOTLIGHTS



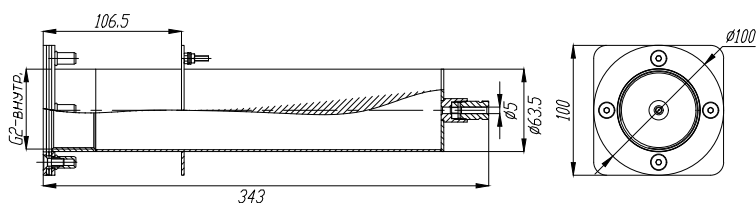
JUNCTION BOXES

SPOTLIGHTS

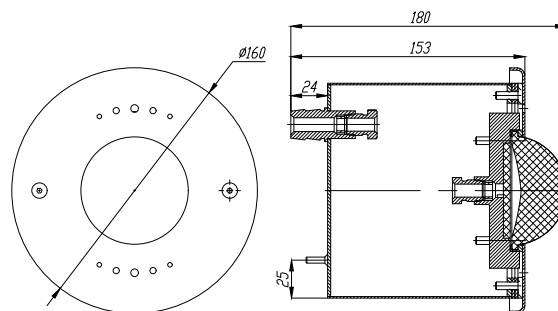


Code AISI-304	Code AISI-316	Name	Power, W
PS.05	PS.05/1	LED spotlight, white	5

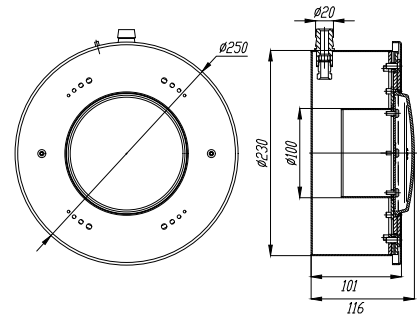
Embedded Parts



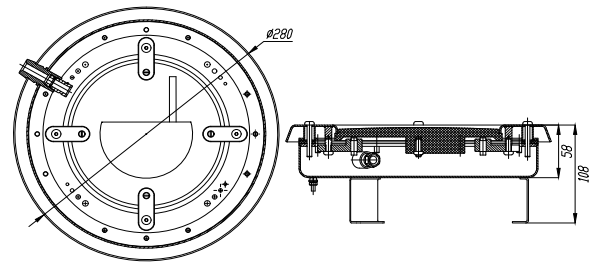
Pool Coating	Code AISI-304	Code AISI-316	Name
Tile	Z.PR.051	Z.PR.051/1	Spotlight embedded part
Liner	Z.PR.052	Z.PR.052/1	Spotlight embedded part



Code AISI-304	Code AISI-316	Name	Power, W
PS.30	PS.30/1	LED spotlight, white	30
PS.30.1	PS.30.1/1	LED spotlight, RGB	30



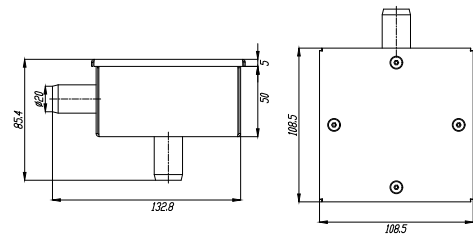
Code AISI-304	Code AISI-316	Name	Power, W
PS.54	PS.54/1	LED spotlight, white	54
PS.54.1	PS.54.1/1	LED spotlight, RGB	54



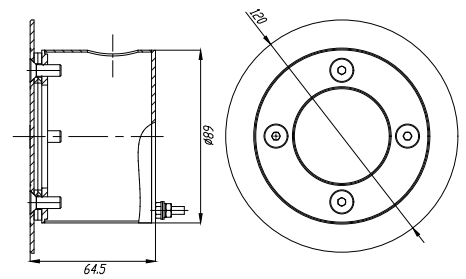
Code AISI-304	Code AISI-316	Name	Power, W
PS.30.PAR56	PS.30. PAR56/1	LED spotlight, white PAR56	30
PS.30.1.PAR56	PS.30.1.PAR56/1	LED spotlight, RGB PAR56	30

JUNCTION BOXES

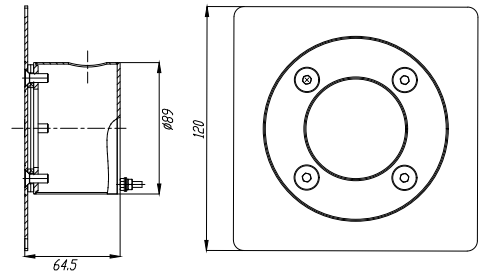
Junction boxes are designed to extend the cable line from the spotlight to the transformer. They are equipped with a waterproof cover and can be installed on the side of the pool.



Code AISI-304	Code AISI-316	Name
RK.01.0	RK.01.0/1	Junction box



Code AISI-304	Code AISI-316	Name
RK.02.1	RK.02.1/1	Junction box with circular front panel



Code AISI-304	Code AISI-316	Name
RK.03.1	RK.03.1/1	Junction box with square front panel

XENO ZONE

Water Technologies and Equipment

AUTOMATION & CONTROL



**PIEZOELECTRIC
BUTTONS**



**PNEUMATIC
BUTTONS**

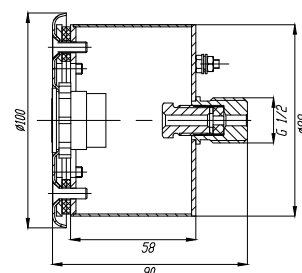
PIEZOELECTRIC BUTTONS & ADAPTERS

Connecting cable length - 10 m.

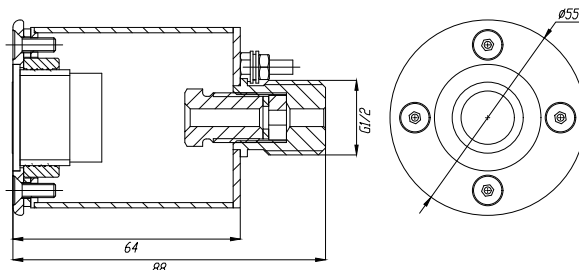


Code AISI-304	Code AISI-316	Name
PK.01	PK.01/1	Piezoelectric button

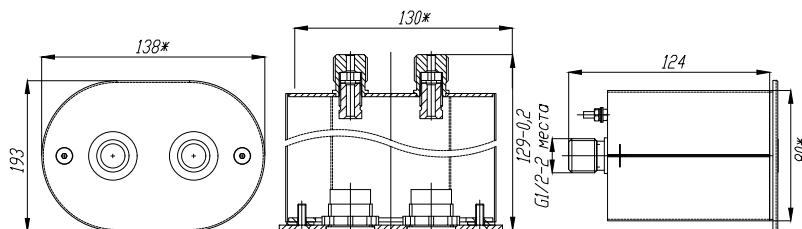
Adapters for Piezoelectric Buttons



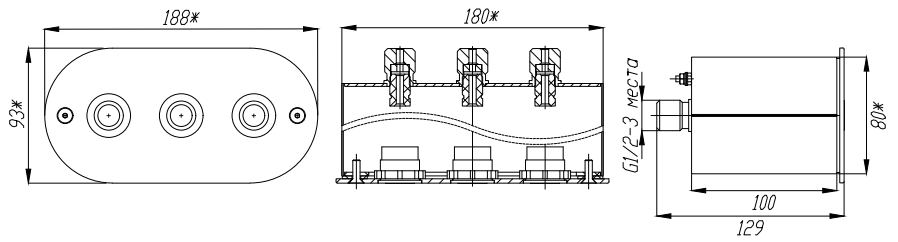
Pool Coating	Code AISI-304	Code AISI-316	Name
Liner	AD.02.0	AD.02.0/1	Adapter for 1 button



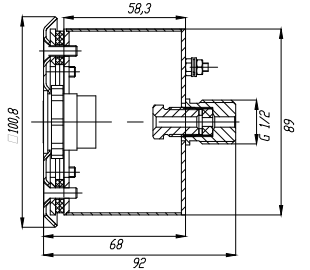
Pool Coating	Code AISI-304	Code AISI-316	Name
Tile	AD.02.0M	AD.02.0M/1	Mini-adapter for 1 button



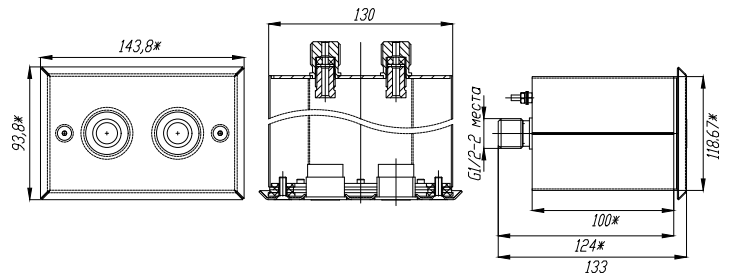
Pool Coating	Code AISI-304	Code AISI-316	Name
Tile	AD.02.2	AD.02.2/1	Adapter for 2 buttons



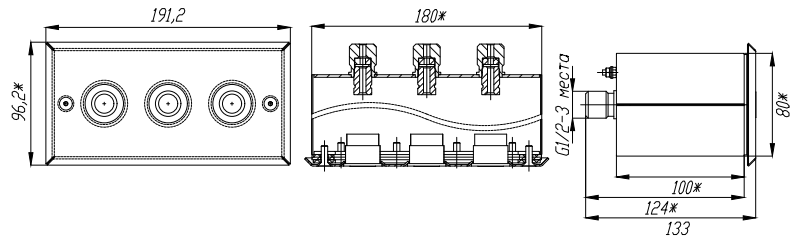
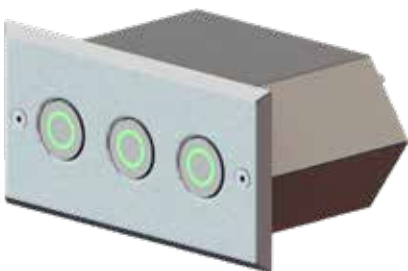
Pool Coating	Code AISI-304	Code AISI-316	Name
Tile	AD.02.3	AD.02.3/1	Adapter for 2 buttons



Pool Coating	Code AISI-304	Code AISI-316	Name
Liner	AD.02.0-01	AD.02.0-01/1	Adapter for 1 button



Pool Coating	Code AISI-304	Code AISI-316	Name
Liner	AD.02.2-01	AD.02.2-01/1	Adapter for 2 buttons



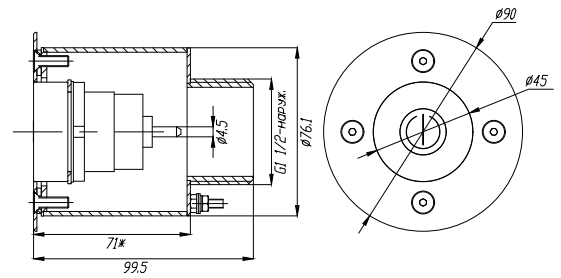
Pool Coating	Code AISI-304	Code AISI-316	Name
Liner	AD.02.3-01	AD.02.3-01/1	Adapter for 3 buttons

PNEUMATIC BUTTONS & ADAPTERS



Code AISI-304	Name
PNK.02	Pneumatic button

Adapters for Pneumatic Buttons



Code AISI-304	Code AISI-316	Name
AD.01.2	AD.01.2/1	Adapter for 1 pneumatic button

XENO ZONE

Water Technologies and Equipment

HANDRAILS & AHCHORS



HANDRAILS

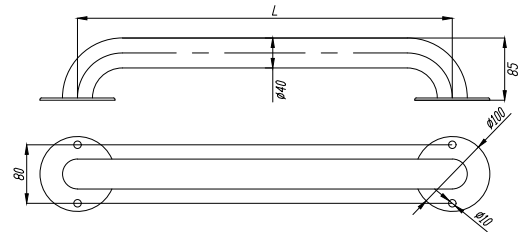


AHCHORS

HANDRAILS

Mirror polished stainless steel handrails are designed for fastening on straight and radius sections of the swimming pool sides. Apart from the models below, we can manufacture individually designed handrails according to customer drawings and sketches.

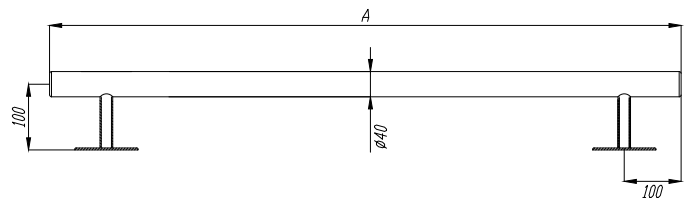
Curved Handrails



Code AISI-304	Name
PR.050.1	Curved handrail 0,5m
PR.100.1	Curved handrail 1,0m
PR.150.1	Curved handrail 1,5m
PR.200.1	Curved handrail 2,0m
PR.250.1	Curved handrail 2,5m
PR.300.1	Curved handrail 3,0m

Code	L
PR.050.1	500
PR.100.1	1000
PR.150.1	1500
PR.200.1	2000
PR.250.1	2500
PR.300.1	3000

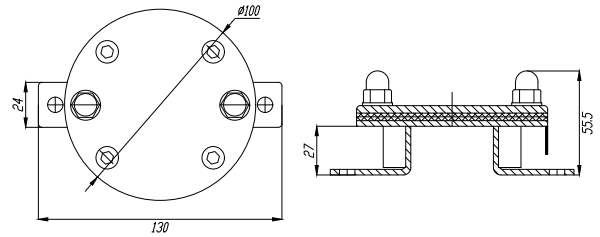
Straight Handrails



Code AISI-304	Name
PR.100.2	Straight handrail 1,0m
PR.150.2	Straight handrail 1,5m
PR.200.2	Straight handrail 2,0m
PR.300.2	Straight handrail 3,0m
PR.500.2	Along the side handrail (from 5 m.)

Code	L
PR.100.2	1000
PR.150.2	1500
PR.200.2	2000
PR.300.2	3000
PR.500.2	5000

Handrail Embedded Part

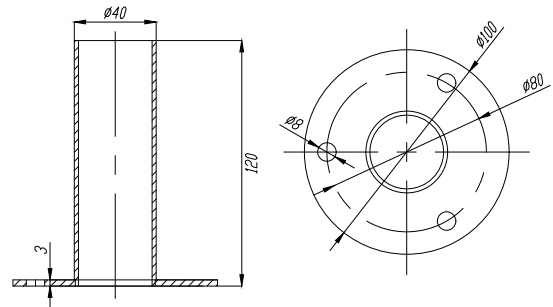


Code AISI-304	Name
PR.000.2	Handrail embedded part

ANCHORING FIXINGS

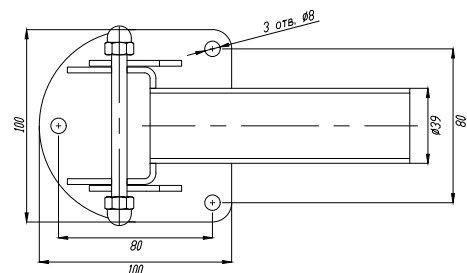
LADDER ANCHOR

Anchoring sockets are designed for fastening ladders, grabrails and railings and are to be screwed on a solid base. The design of the product allows for quick installation and dismantling of the ladder.



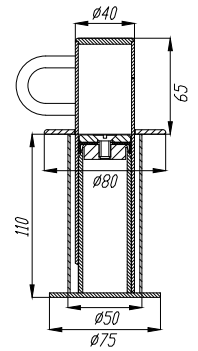
Code AISI-304	Name
PR.000.3	Ladder anchoring socket

ARTICULATED ANCHOR



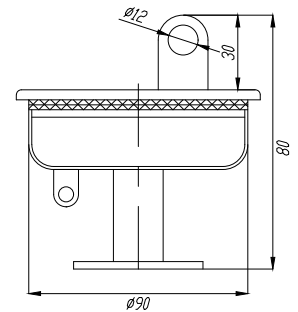
Code AISI-304	Name
PR.000.6	Articulated ladder anchoring socket

FLOAT LINE ANCHOR



Code AISI-304	Name
PR.000.4	Float line anchoring socket

FLOAT LINE HOOKED ANCHOR



Code AISI-304	Name
PR.000.5	Float line anchoring socket with a hook

XENO ZONE

Water Technologies and Equipment

OTHER



**OVERFLOW
GRATING**



**ACOUSTIC
ADSORBER**



AIR ADJUSTER

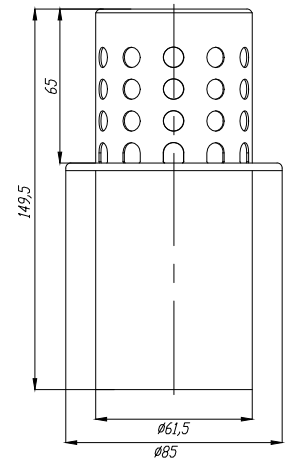
OVERFLOW GRATING

Tiles for overflow trays are made in 2 types: with a matte surface and a mirror one. They are assembled on straight sections in modules (0.5 m) and are attached to corner elements made at 90 or 45 degrees.

Manufacturing material - AISI-304 or AISI-316 stainless steel. The gratings are made individually according to the actual dimensions of the overflow tray.



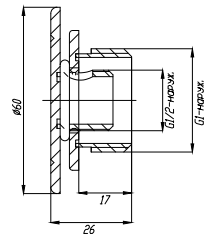
ACOUSTIC ADSORBER



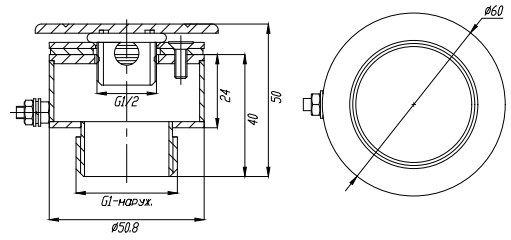
Code AISI-304	Name
SG.00.1	Acoustic adsorber for overflow trays

AIR ADJUSTER

Air adjuster is designed to regulate the air supply to hydromassage jets and counter current units. By mixing air into the water flow, it is possible to change its softness and massage effect.



Pool Coating	Code AISI-304	Code AISI-316	Name
Tile	RV.01.0	RV.01.0/1	Air adjuster



Pool Coating	Code AISI-304	Code AISI-316	Name
Liner	RV.01.2	RV.01.2/1	Air adjuster with embedded part

